

Progress Notes...



August, 2008

Newsletter of the Lesbian and Gay Psychotherapy Association, Southern CA, Inc.

(310) 288-3465

A Word From One of Our Co-Presidents

LAGPA has been providing a platform where GLBT therapists can meet and exchange new information through conferences and social events. The educational events are also intended for those in the non-LGBT community who want to learn more about GLBT issues. We have had many exciting events.

The annual conference on June 1 was a major success: close to 100 persons were in attendance for a total of 15 workshops. Some of these were organized around this year's theme of "Traditions vs. Freedoms" ("Gay soul vs. assimilation"). Most of the other workshops dealt with a variety of general interest not necessarily linked to the theme. For example: transgender issues, psychotherapy with HIV+ clients in light of the increase of infections, how one mainstream church welcomes GLBT members, therapy with gay couples, and teenagers coming out at

an earlier age. Antioch hosted this year's event and did a fabulous job. They even provided a last-minute keynote speaker when the regular speaker failed to show. The breakfast and luncheon provided by our regular caterer were excellent. The annual conference is our major educational event each year. Usually two smaller conferences consisting of one or two workshops in the evening are also held.

We are currently planning a workshop on women's issues for the fall of 2008. This may take the form of a number of workshops over a couple of months, or as a mini-conference held on one day. Further details should be available early September.

We were very fortunate to

have Larry Hedges present a one-day workshop about legal and ethical issues. This workshop was a fund-raiser for LAGPA hosted by Phillips Graduate Institute. The workshop was very interesting and informative and also brought in close to \$2,000 dollars. Larry has agreed to do another one early 2009. If you need CEU's for legal/ethical issues, please wait until Larry gives his workshop.

On Sunday, September 7 we will be having our Summer Social, together with our medical doctor friends at the house and garden/swimming pool of Liliane McCain. This event usually takes place during the day and tends to be very relaxed. In December

we will have our Winter Social, which is usually in the evening. The exact date will be set later. Attendance at out two annual social events usually is between 80 and 90 persons.

LAGPA will be present with a booth at the annual Los Angeles County Psychological Association (LACPA) convention in October (www.lapsych.org). Please stop by our booth and say hello.

If you have not renewed your membership, please do so immediately. You won't want to miss out on any of our exciting up-coming events.

-Robbert Schalekamp,
Psy.D ▼

NEW and RETURNING MEMBERS

We want to welcome the new and returning members to LAGPA who have signed up since the last issue of the *Progress Notes*. Thank you for your support.

AUGUST, 2008 ISSUE CONTENTS

Co-President Report	1
New Members	1
Exec. Dir. Report	2
Article by Sadownick	3,4
Summer Social Info	5,6
PHOTOS: LAGPA 14 th Annual Conference	10,11,12
Classified Ads	14
Calendar	19



Hasmik Arakelyan, MA
Scott Beardsley, MA
Ned Beddie, MA
John Buckley, PhD
Brian Chenoweth
Jeffrey Chernin, PhD
Darryl Christian, MFT
Robert Colegrove, PhD
Rick Coons
Steve David, PsyD
Rick Deaton, PsyD
Mark Fairfield, LCSW
Waverly Farrell, MFT
Mike Fatula, MFT
Linda Gary, MA
Barry Glasgow, MA
Monika Goebel, MA
Christopher Grant, MA

Stanley Harris, MD
Yisracla Hayman
Lawrence Hedges, PhD
Robbie Horwitz, MA
Marston James, MFT
Dino Koutsolioutsos, PhD
Linda Landon, ACC
Sandy Lee
Monica Leon, MFT
Lawrence Levi, MA
Michael Liberatore, MA
David Lisonbee
Christine Logan, MFT
Rachel Marks, PsyD
Lisa Maurel, MFT
Brian McDonald, LCSW
Louis Monaco, PsyD
Emily Moore, MFT

Diana Pash, PhD
Thomas Pier, MSW
Philip Pierce, MA
Mark Reina, MFT
Julia Reisman, LCSW
Rosanna Santos, MFT
Robbert Schalekamp, PsyD
Erik Schott, LCSW
Ronald Scott, PhD
Matthew Silverstein, PhD
Daniel Szuhay, MA
Sheila Traviss, MA
Gary White, MA
Fred Wilkey, EdD
Denis Wohlgemuth, MFT
Ray Zamudio, MA
Joseph Zipkin

Executive Director Report

LAGPA continues to grow. The Ethics Workshop conducted by Dr. Lawrence Hedges in March attracted 30 paid attendees. I heard so many great things about Larry and his ability to create an interesting and informative workshop. On top of that, Larry donated his time so LAGPA was able to net almost \$2,000 for the event. Thanks Larry. LAGPA could use more members like you. This course is mandatory for all psychologists every two years. Larry has offered to conduct the same workshop in January 2009 and we are

working out the details now.

The Annual Conference was held June 1 at Antioch Los Angeles and hosted by the LGBT Specialization in Clinical Psychology. There were 74 paid attendees of which 41 of them renewed or enrolled as new membership in LAGPA. We are deeply grateful to Antioch and to the 25 presenters who gave such wonderful talks. As usual, the event broke even thanks to our sponsors and volunteers.

An issue that LAGPA is reviewing is the cost for offering CEU to psychologists. For example for the Conference,

the application to MCEP is over 120-pages long and requires three copies. During the event we have all those irritating sign-in sheets. After the event we have to submit statistical information concerning each workshops. It costs in fees and staff almost \$1300 just for the MCEP certificate. Only eleven psychologists used the service. Thus, we are reevaluating if this is effective use of our limited funds. We are kicking around LAGPA getting APA certification or somehow piggybacking on the APA certification of the colleges that we align. Perhaps you have some idea how to simplify and reduce costs related to CEU for psychologists?

August is our annual membership drive. We currently have 160 paid members of which almost half need to renew. I hope you do as LAGPA provides so many services, educational outlets, and social opportunities. Speaking of social events, September

7, will be the Summer Social at Liliane's beautiful house in Beverly Hills. This is a co-sponsored event with SCLMA and is expected to attract about 100 people. It is always great fun, and the food will be provided by our favorite caterer Eddie. In October, LAGPA will have a booth at the LACPA Convention. This is the first time we have done this and need volunteers. See Chuck to sign up. This fall, we are planning a Women's Series of educational forums. This will probably be three or four workshops spaced over a couple of months, or as a mini-conference presented in one day. If you are interested in helping with this, see Chuck. And finally, there will be our annual Winter Social in December, Lawrence Hedges Ethics Workshop in January, and our Annual Conference in June hosted by either USC School of Social Work of Pacific Oaks.

-Chuck Stewart, Ph.D. ▼

ALEXANDER YOO, MA (IMF52075)
INSIGHTFUL, COMPASSIONATE THERAPIST
REGISTERED MARRIAGE & FAMILY THERAPY INTERN

6310 SAN VICENTE BLVD.
SUITE NO. 410
LOS ANGELES, CA 90048

(310) 773-3484
WWW.ALEXANDERYOO.COM
THERAPY@ALEXANDERYOO.COM

SUPERVISOR JAN REYNOLDS, MA, MFT (MFC21785)

Depression and Anxiety
Life Transitions
Addiction/Recovery
Cycles of Abuse
Cultural, generational issues
Crises of Identity and Belief
Spirituality
Grief and Loss, Aging, Our
Changing Bodies, Disability,
End of Life, Death
(Experienced hospice chaplain)

Trans/Gender/Queer
Sexuality
Gender
Leather/BDSM folk
Non-monogamy
"Alternative" Families
Children and Youth
Parenting
Groups: Partners of Trans People,
Parents of Trans Folk, GenderQueer
Support, FTM Coming Out, and more

Group for PARTNERS of Trans People Starting SOON

Available for peer consultation on transgender and sexually diverse psychotherapeutic and clinical concerns.

A leading Gender Diversity Clinician and Applied Community Psychology Specialist, Alexander educates mental health and medical providers on gender issues and administrative practice. A nationally recognized author and educator in print and on radio, film, and television, he provides sensitivity, cultural competency, and EEO Compliance training as an organizational development consultant to businesses, institutions, health providers, government bodies, and educational systems.



A glimpse into Fredda Wasserman's workshops. Like what you see? More pictures from the 14th Annual LAGPA conference found on Pages 10-12.

Note to LAGPA Members

By Douglas Sadownick, Ph.D., MFT

Director of the LGBT Specialization, Clinical Psychology at Antioch University, Los Angeles

This past June, the Los Angeles Gay and Lesbian Psychotherapy Association held its annual conference at Antioch University Los Angeles, which co-sponsored the event through Antioch's LGBT Specialization in Clinical Psychology. As the director of the specialization, I was particularly proud and excited to be able to help sponsor what I thought was, overall, a successful educational event. It's a rare and precious occasion for people to come together to celebrate and learn about ways in which professional therapists are applying affirmative psychotherapeutic theory and practice to our LGBT clients, patients and community, as well, as how we are learning, as professionals, to apply those ideas to our own personal lives.

I thought it would be useful to write a summary of the specialization, its history and purpose, in the hopes of generating interest and support for the program, and inviting all who participated in the recent collaborative LAGPA conference to stay in touch with us so as to keep abreast on the many cultural events we offer to the larger mental health and LGBT activist communities, such as our recent event last July 20, the "TransTeachIn: On the Fundamentals of a TransAffirmative Psychotherapy," which brought together many leading figures in the Trans Community (such as LAGPA's own Rev. Alexander Yoo, also Dr. Madeline Deutsch, Daniel Gould, Jessie Jacobson, Valerie Spencer, Alexis Rivera, Marie Keller, Elise Turin, and Antioch students Tatiana Lim and Tyler Daly). We are also going to be offering classes as CEUs, and we are planning

on starting a post-master's certificate either in October or in January for licensed or pre-licensed folks who want to improve their competency in working with the LGBT populations utilizing state-of-the-art interventions. Our next events include a "Marriage Colloquium" on October 15, 6:00-8:00 p.m. which will bring together the community to "process" complex feelings on marriage. Following that, on October 22, Dr. Neal King, our University President, who is an openly gay man, will give a talk on gay men and trauma, 6:00-8:00 p.m. along with LGBT Specialization Associate Dr. Matt Silverstein. In the winter we will have a follow-up event to our Roundtable Discussion on Trans-Affirmative Psychology to follow-up from the TransTeachIn. All LAGPA associates are invited to all these events.

LAGPA members may find it informative to learn some background on the LGBT specialization, which we be-

lieve to be the first master's in LGBT affirmative psychotherapy in the country. Several key studies have documented the crisis of competency in psychology training programs around the country in terms of sensitizing graduate students to the unique needs and potentials of LGBT clients. What is called the "disease model" of homosexuality still reigns in either covert or overt ways in the mental health profession. To address this crisis, the "Division 44," the LGBT contingent of the American Psychological Association published in 2000 "Ethical Guidelines on the Treatment of LGB clients." These guidelines are remarkably progressive in how they guide therapists to monitor their own biases and thereby seek to treat LGB clients as uniquely unfolding individualities, with their own ways of creating kinship ties, sexuality and managing the impact of their families of choice and of origin. In concert with the APA's interven-

tion on professional homophobia, on the transgender front, important statements have come out promoting a trans-affirmative stance that frees itself from the "gate-keeping" tasks of therapists who had previously been locked into the role of "writing letters" for surgery reassignment and hormone delivery and diagnosing trans people with Gender Identity Disorder; a new era of competent psychotherapists are invited to break from the "illness model" by affirming the fundamental naturalness of transgender orientations.

Credit goes to Dr. Joy Turek, Chair of the Master of Arts Program at Antioch, for having had the inspiration a decade ago of creating a specialization aimed uniquely to address this crisis in care in the LGBT community. Others who helped include then-lesbian professor and activist Sandra Golvin, who died of cancer two years ago, as well as the dedicated work of Matt Silverstein, Charley Lang, and



LGBT Specialization graduating class, Spring 2008

Continued from Page 3

Alexander Yoo, as well as myself. Three years ago, I was hired on an interim basis to assess for feasibility, and to launch a pilot program, and a year later, I was hired as the director, when formal operation began: our current curriculum was implemented, we developed a "Founders Board" that would contribute to specialized training of instructors, and an "Advisory Board" of community partners (e.g., such as the L.A. LGBT Center; Friends of Project Ten; AIDS Healthcare Foundation; Bienestar and political leaders such as John Duran and Phill Wilson, Industry people such as Howard Roseman and artists such as Tim Miller), that contributes to educational community-building and seeks input for continued program improvement. Our goal was to synthesize the APA standards with those created by Arlene Lev (author of *Transgender Emergence*), together with Antioch's 150-year mission of social justice, and my own interest in gay liberation history and gay soul, to create a specialization that could serve as a standard for other universities to follow. Our main courses are Human Sexuality, LGBT History and Myth, LGBT Multicultural Counseling, LGBT Clinical and Psychological Issues through the Lifespan, Affirmative Therapy and Community Action. As mentioned above, the program also offers a host of workshops and other community enhancing events. We are also very honored to have received the help from two major founding entities, the Johnson Family Foundation (under the auspices of the alumnae Paul Hokemeyer) and the Ladd Family Foundation (under the auspices of alumnae Jessie Jacobson, who is also one of our Founders). We are also deeply grateful to all those alumni who have donated, including Lily Dulan and Gilda Franz. With this help we have

been able to develop the Sandra Golvin Memorial Scholarship Fund (recipients include Dr. Diana Pash, Monique Boone, Patrick Bozarth, Rene Dumez, Phillip McCullely, Robert Ishinger, Tatiana Lim, Tad King and Roberto Gonzalez Focil). We are also proud to have given our first Transgender Scholarship to Tatiana Lim. During the LAGPA conference, the LGBT students provided a workshop, organized by LGBT Specialization student Michael Liberatore, based on their LGBT Myth and History class that was taught by Dr. Steve David (a member of APA's Division 44), and which included the fine involvement of Sheila Travis, Dr. Diana Pash, Roberto Gonzalez Focil, and Robert Ischinger.

I cannot say enough about how good it was to work with the LAGPA organizers to put on the recent conference, and I look forward to future collaborative projects. I want to encourage all LAGPA members to drop us a note through email, or call us, and say hi, give us feedback, or just to be able to receive information about upcoming events, CEU opportunities, and our post-master's certificate. Also please visit our Facebook page at AntiochLGBTSpecialization.

Please email us at LGBTspezialization@antiochla.edu, or drop me a line at Douglas_sadownick@antiochla.edu
-Douglas Sadownick, Ph.D., MFT▼

Editor's Note: Links to photos from the TransTeachIn can be found at www.alexanderyoo.com.



USC | School of Social Work

Shape your future
Reshape the world

www.usc.edu/socialwork

Psychotherapy Services

Louis Buchhold
MFT, ATR-BC, EdDCP-ABD
MFC 40266

760-318-5929 (in Los Angeles)
LouisBuchholdLMFT@Counselor.com

BRIAN McDONALD, LCSW

Psychotherapy • Consultation

447 North Larchmont Blvd.
Los Angeles, CA 90004

818-624-7175
License# LCS16344

Individuals • Couples/Families • Adolescents

NILES D. WILLITS-SPOLIN, MFT

Psychotherapy

16260 Ventura Blvd. • Suite 415 • Encino, CA 91436

818-773-3576

Licensed Marriage & Family Therapist MFC 38351

The Lesbian and Gay Psychotherapy Association (LAGPA) Announces...

The Annual Summer Social Pool Party!

Co-Hosted by SCLMA, Southern California Lambda Medical Association

When: Sunday, September 7, 12-4 PM

Where: At the home of Liliane Quon McCain, LAGPA Co-President, 608 North Hillcrest Road, Beverly Hills, CA 90210, 1.5 blocks north of Santa Monica Blvd. (See map on next page).

Cost: LAGPA and SCLMA Members, FREE!
Guests, \$10 – Great opportunity to renew membership!

RSVP: Chuck Stewart, Executive Director,
LAGPA@sbcglobal.net

A fun event to catch up with colleagues, friends, and enjoy delightful food and conversation!

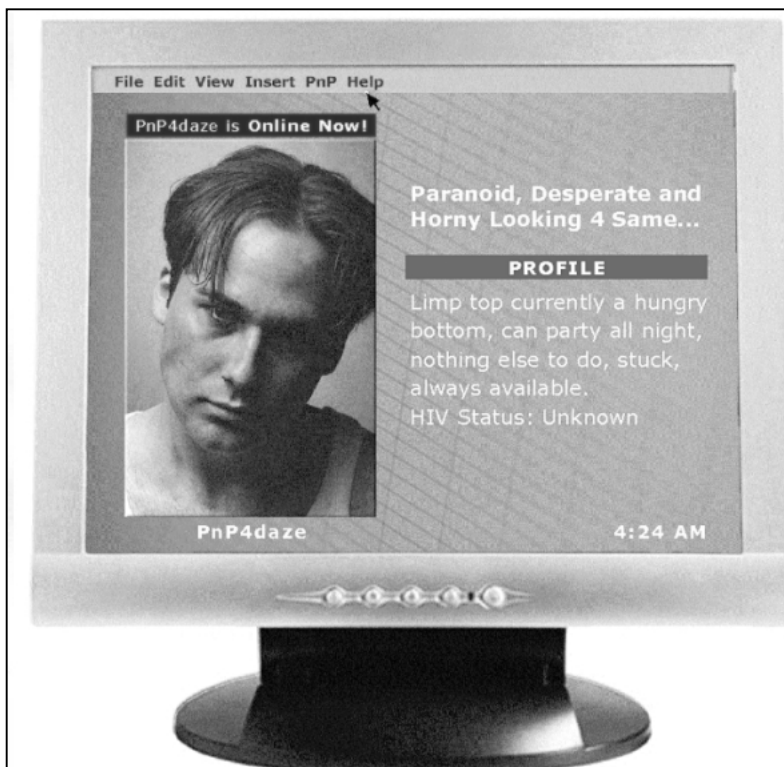
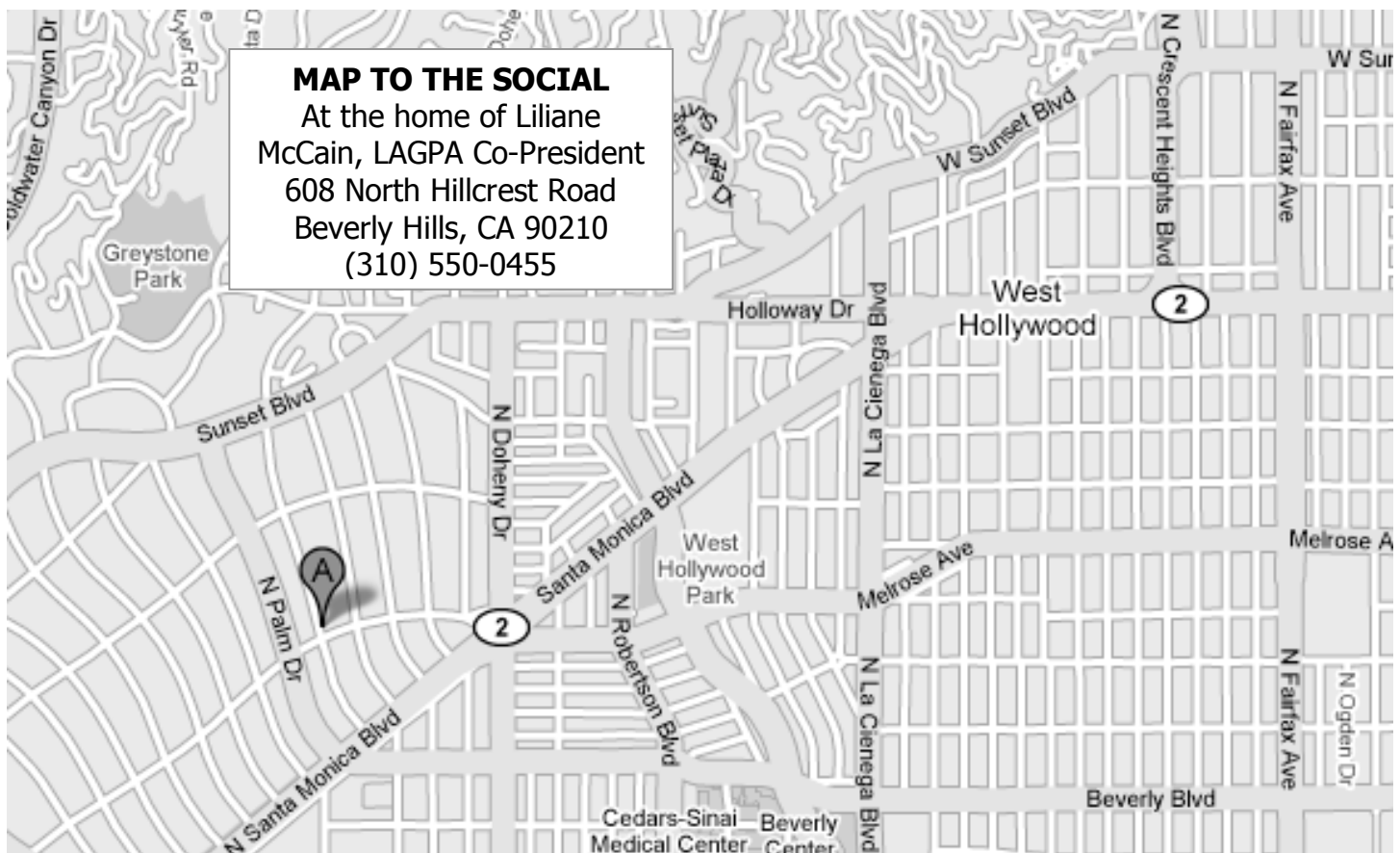
Reminder to swimmers: Bring sunblock and a towel.

Last year, we had almost 90 members attend, so **please make sure to RSVP to assure ample food and drinks for all.**

A FREE event to current LAGPA members; guests and others pay a modest \$10 each for terrific food and fun. Not a LAGPA member? Now is the time to join!

Membership applications will be available at the door.

Every effort has been made to meet the dietary needs of vegetarians.



Spending hours online...? Partied out? Done playing?

Friends La Brea provides free drug counseling
as part of a research study
for gay and bisexual men who use methamphetamine.

The study will evaluate the effects of combining
drug counseling with a behavioral intervention
that gives rewards for providing clean urine samples.

Participation is 16 weeks and one follow up evaluation.

Help yourself and your community.

FRIENDS LA BREA

323-463-7001

1419 North La Brea Avenue,
Hollywood, CA 90028

A clinic of Friends Research Institute, Inc. in collaboration with Van Ness Recovery House and
UCLA Integrated Substance Abuse Program. Funded by the Universitywide AIDS Research Program.

LGBT Specialization in Clinical Psychology

Master of Arts in Clinical Psychology at Antioch University – First in the Country!

Train to work with the LGBT community by learning the cutting edge in affirmative practice

- Cultural Sensitivity
- History
- Multiculturalism
- Clinical/Community Issues

ANTIOCH
UNIVERSITY
LOS ANGELES

Now Accepting Students!

Visit our website: www.AntiochLA.edu

Sandra Golvin Memorial Scholarships
Available

For more information, contact Douglas
Sadownick, Ph.D. at 310.578.1080 x309



Gay Owned and Operated

Intensive Outpatient Addiction Treatment

**TWIN TOWN
TREATMENT CENTERS**

WWW.TWINTOWNTREATMENTCENTERS.COM

**(866) 594-8844
(310) 623-1477**

West Hollywood, North Hollywood, Los Alamitos, Orange, Torrance

Certified by the State of California
Accredited by JCAHO

TARZANA TREATMENT CENTERS

IS PROUD TO
SPONSOR THE 2007
LAGPA CONFERENCE



Accredited by the Joint Commission
on Accreditation of Healthcare Organizations

1-800-996-1051
www.tarzanatc.org

Incorporated in 1972

Main location-18646 Oxnard St., Tarzana, CA 91356
TARZANA • RESEDA • NORTHRIDGE
LONG BEACH • LANCASTER

HIV/AIDS Services • Medical Detoxification
Residential Rehabilitation • Outpatient Services
Youth Services • Sober Living Housing
Mental Health Services • Family Medical Care

HELP HER TAKE BACK HER LIFE START WITH THE PROMETA® PROTOCOLS



INTEGRATED OUTPATIENT THERAPY
FOR ALCOHOL, COCAINE AND
METHAMPHETAMINE DEPENDENCE

- Designed to target key neuroreceptors to help relieve cravings and improve cognitive function
- Helps restore nutritional balance
- Initiates psychosocial counseling



LEARN MORE ABOUT
THE PROMETA PROTOCOLS
DR. DAGMAR LIEPA
LICENSED PROMETA TREATMENT PROVIDER
310-866-9521
VALLEY CARE MEDICAL
MISSION COMMUNITY HOSPITAL

PROMETA is an integrated therapy
designed to help patients fully engage
in the entire recovery process

PROMETA®
PROMETAINFO.COM

Clinical studies are under way to evaluate PROMETA® and to confirm reports from physicians using PROMETA in their practices. Only a physician licensed to treat with the PROMETA protocols can determine if they are appropriate for any individual patient. The medications used in the PROMETA treatment protocols are Food and Drug Administration (FDA) approved for uses other than treating dependence on alcohol, cocaine or methamphetamine. Therefore, the risks and benefits of using these medications to treat dependence on these substances have not been evaluated by the FDA. Hythiam does not manufacture, distribute, or sell any medications and has no relationship with any manufacturers or distributors of medications used in the PROMETA protocols.

©2007 Hythiam, Inc. All rights reserved. The PROMETA protocols are proprietary, patented and patent pending. Hythiam, the Hythiam logo, PROMETA, the PROMETA treatment protocols, and the PROMETA logo are trademarks of Hythiam, Inc.

AIDS Project Los Angeles Pacific Center Program



Volunteer Opportunity

- A chance to be of service and give back
- **You Provide:** pro-bono psychotherapy, to one client, in your private practice office
- **Pacific Center Provides:** Consultation with APLA mental health providers and training on HIV & mental health issues —free CEUs education

For information call: 213-201-1621
or visit our website at: www.apla.org



This advertisement is made possible by a grant of Ryan White Title I Funds from the Los Angeles County Department of Health Services, Office of AIDS Programs and Policy.

ROSANNA M. SANTOS, MA, MFT*Marriage and Family Therapist*
License # 42968

Tel: 818.515.2441 23542 Lyons Ave., Ste. 206 Santa Clarita, CA 91321

ADHD SPECIALISTS

ADULTS – TEENS – CHILDREN

818-501-5300ADHD & CO-EXISTING CONDITIONS
MEDICATION MANAGEMENT
PSYCHOTHERAPY & COACHING**10% DISCOUNT FOR LAGPA/SCLMA REFERRALS****www.ADHDspecialists.com****Aptima Behavioral Medical Group, Inc.****Adele House, M.A., RD***Psychotherapy**Relationship Difficulties
Depression
Anxiety
Self-Esteem
Coming Out**New location in Hollywood***www.awarenesstherapy.com**Registered MFT Intern No. 48375
Hollywood, CA 90068
(310) 266-7462Supervisor
Thomas F. Young, PsyD
Clinical Psychologist PSY18246Caterer of the Thirteenth Annual
LAGPA Psychotherapy Conference**Chef EDDIE
MORGADO***Private Chef & Caterer*1203 N. Cherokee Avenue
Los Angeles, CA 90039
E-mail eddieaten@aol.com
Phone (310)270-7246**LOUIS D.
MONACO
Psy.D**

Licensed Psychologist

Evaluation, Testing
& Psychotherapy

Individuals & Couples

Sexuality & Intimacy

**310.666.7952****www.monacopsych.com**

CA PSY21425

Photos from the 14th Annual LAGPA Conference, June 1, 2008

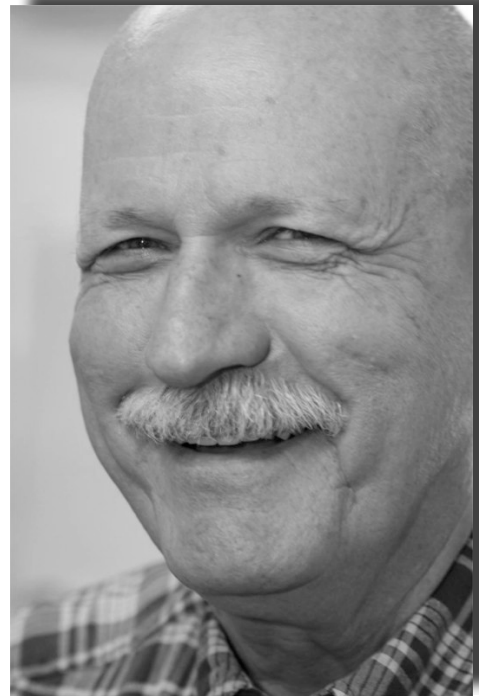
Hosted by the LGBT Specialization in Clinical Psychology, Antioch University, Los Angeles

Links to complete photo sets available at www.alexanderyoo.com and

http://www.fuzzyink.com/Sals_World/Pictures/Pages/LAGPA.html.



©2008 therapy@alexanderyoo.com



©2008 therapy@alexanderyoo.com



Continued on next page.



©2008 therapy@alexanderyoo.com



©2008 therapy@alexanderyoo.com

©2008 www.alexanderyoo.com

therapy@alexanderyoo.com



We believe

Passionate

people can change the world.

Looking for a unique, experiential graduate degree program?

For more than 35 years, Phillips Graduate Institute has helped motivated people pursue their career passions. Call today for more information about our six fully-accredited graduate degree programs in psychology and business including:

- Marriage and Family Therapy (MA)
- Marriage and Family Therapy/Art Therapy (MA)
- School Counseling/PPS (MA)
- School Psychology/PPS (MA)
- Clinical Psychology (PsyD)
- Organizational Consulting (PsyD)

Phillips is accredited by WASC and approved by AATA, CTC, and the BBS.

Do You Need Somewhere To Refer Clients With Financial Hardship?

The California Family Counseling Center (CalFam) provides sliding scale counseling and low fee testing to hundreds of individuals, couples, families, children, adolescents and seniors. As the counseling and training extension of Phillips Graduate Institute, CalFam provides Phillips students and graduates with exceptional opportunities to gain counseling experience through traineeships and internships. For more information, call 818-386-5600.

PHILLIPS GRADUATE INSTITUTE

Education Training Counseling

**CELEBRATING 35 YEARS OF EXCELLENCE IN EDUCATION,
TRAINING, COUNSELING, AND COMMUNITY SERVICE**

**www.pgi.edu ■ Info@pgi.edu
818-386-5660**

5445 Balboa Blvd., Encino, CA 91316

CLASSIFIED ADVERTISEMENTS



Position: Mental Health Clinician III
Program: Mental Health Services
Reports to: Clinical Director
Salary: 23.00
Status: 50%
Probation: 90 days - Non-Exempt Hourly/Union
Benefits:

JOB SUMMARY:

Conducts individual, couple and group counseling services, documenting progress, utilizing short term model in treatment planning to the greatest extent possible; serve on-duty as Triage Point Person, seeing walk-ins.

ESSENTIAL FUNCTIONS:

- 1) Conduct individual, couple and group counseling services for clients presenting to the MHS and documents progress in the client's record immediately following the session;
- 2) Utilize short term model in treatment planning to the greatest extent possible;
- 3) Serve on-duty for designated hours each week to handle walk-ins, whether crisis oriented or not, as well as general information. May complete Intake at the time of seeing a walk-in client if deemed appropriate;
- 4) Conduct Intakes, prepares the required documentation and routes the client's record to the supervisor for disposition/placement;
- 5) Participate in the multi-disciplinary Clinical Case Conference, presenting assigned cases as they come due for review;
- 6) Make appropriate referrals to services outside the Center, w/in and to other services within the Department, e.g., psychiatric evaluation; and, follows up on those referrals with the client to assure appropriateness of the referral & continuity of care;
- 7) Participates in the Quality Improvement process practiced in the Clinic;
- 8) Adhere to the Utilization Management protocol used in the clinic to insure timely and appropriate client service;
- 9) Assume responsibility for completing all documentation in a timely, legible and thorough manner, submitting client records at the end of each business day, and proper notification of changes in appointment schedule to supervisor and Administrative Support staff;
- 10) Participates, as assigned, in clinical supervision groups;
- 11) Participation with supervisor and/or members of the MHS Management Team in program planning, program evaluation, dissemination activities and training, especially in regards to development of protocols related to the provision of letters in support of Hormone Replacement Therapy and/or Gender Reassignment Surgery;
- 12) Participate in staff meetings, planning meetings and other meetings as needed;

ADDITIONAL RESPONSIBILITIES:

- 1) Other duties as assigned;

JOB QUALIFICATIONS AND EXPERIENCE:

- 1) Extensive clinical experience working with transgender population, including thorough knowledge of psychosocial issues related to gender variance and transition.
- 2) At least two years paid post graduate counseling experience, i.e., residential care, social services, child welfare services, general counseling, chemical dependency treatment, juvenile justice, youth services, etc.;
- 3) Ability to work as a team member dedicated to generating resources/services to gay, lesbian, bisexual, & transgender communities;
- 4) Proven ability to work under direct supervision;
- 5) Ability to relate in a non-judgmental and respectful manner to gay, lesbian, bisexual and transgender individuals, or people experiencing a wide variety of emotional and behavioral problems.
- 6) Excellent verbal and written communication skills, including strong organizational, detail and interpersonal skills;
- 7) Computer skills and knowledge including word processing, database operations, spreadsheets, and other software systems;
- 8) Demonstrated ability to work effectively with men and women of diverse races, ethnicities, ages, sexual orientations and gender identities in a multicultural environment;
- 9) Flexibility to work some evenings and/or Saturday morning hours.

TRAINING, EDUCATION, AND LICENSURE:

- 1) Ph.D./Psy.D. or Masters in behavioral science discipline (MSW is strongly preferred);
- 2) Licensed in applicable field of practice.



Position: Mental Health Clinician III
Program: Mental Health Services
Reports to: Clinical Director
Salary: 23.00
Status: 100%
Probation: 90 days - Non-Exempt Hourly/Union
Benefits: Medical, Vision, Dental, and Life Insurance; also including Long Term Disability, an Employee Assistance Program, and a 403B retirement plan

JOB SUMMARY:

Conducts individual, couple and group counseling services, documenting progress, utilizing short term model in treatment planning to the greatest extent possible and serve on-duty walk-ins, crisis, as well as general information and crisis telephone calls.

ESSENTIAL FUNCTIONS:

- 13) Conduct individual, couple and group counseling services for clients presenting to the MHS and documents progress in the client's record immediately following the session;
- 14) Utilize short term model in treatment planning to the greatest extent possible; must receive concurrence of supervisor to extend number of sessions beyond the short term model protocol;
- 15) Serve on-duty for designated hours each week to handle walk-ins, whether crisis oriented or not, as well as general information and crisis telephone calls. May complete Intake at the time of seeing a walk-in client if deemed appropriate;
- 16) Conduct Intakes, prepares the required documentation and routes the client's record to the supervisor for disposition/placement;
- 17) Participate in the multi-disciplinary Clinical Case Conference, presenting assigned cases as they come due for review;
- 18) Make appropriate referrals to services outside the Center, w/in and to other services within the Department, e.g., psychiatric evaluation; and, follows up on those referrals with the client to assure appropriateness of the referral & continuity of care;
- 19) Participates and/or takes a leadership role in the Quality Improvement process practiced in the Clinic;
- 20) Adhere to the Utilization Management protocol used in the clinic to insure timely and appropriate client service;
- 21) Assume responsibility for completing all documentation in a timely, legible and thorough manner, submitting client records at the end of each business day, and proper notification of changes in appointment schedule to supervisor and Administrative Support staff;
- 22) Participates, as assigned, in clinical supervision groups and/or individual supervision on a weekly basis;
- 23) Mandatory attendance at monthly in-service training sessions;
- 24) Assists in the coordination of the work of paraprofessional volunteers and Mental Health Clinicians I, II and III;
- 25) Participation with supervisor and/or members of the MHS Management Team in program planning, program evaluation, dissemination activities and training;
- 26) Participate in staff meetings, planning meetings and other meetings as needed;

ADDITIONAL RESPONSIBILITIES:

- 2) Other duties as assigned;

JOB QUALIFICATIONS AND EXPERIENCE:

- 10) Three years paid post graduate counseling experience, i.e., residential care, social services, child welfare services, general counseling, chemical dependency treatment, juvenile justice, youth services, etc.;
- 11) Bilingual, Spanish-speaking required;
- 12) Ability to work as a team member dedicated to generating resources/services to gay, lesbian, bisexual, & transgender communities;
- 13) Proven ability to work under direct supervision;
- 14) Ability to relate in a non-judgmental and respectful manner to gay, lesbian, bisexual and transgender individuals, or people experiencing a wide variety of emotional and behavioral problems.
- 15) Excellent verbal and written communication skills, including strong organizational, detail and interpersonal skills;
- 16) Computer skills and knowledge including word processing, database operations, spreadsheets, and other software systems;
- 17) Demonstrated ability to work effectively with men and women of diverse races, ethnicities, ages, and sexual orientations in a multicultural environment;

TRAINING, EDUCATION, AND LICENSURE:

- 3) Ph.D./Psy.D.. or Masters in behavioral science discipline—MSW strongly preferred;
- 4) Licensed in applicable field of practice for a minimum of two years—licensed Ph.D./Psy.D. or LCSW strongly preferred;

The L.A. Gay & Lesbian Center is an Equal Opportunity Employer and is committed to fostering diversity within its staff. Applications are encouraged from all persons regardless of their race, color, national origin, ancestry, sex, gender identity, marital status, religious creed, medical/physical/mental condition, sexual orientation, or age.

Progress Notes

A quarterly publication of the Lesbian and Gay Psychotherapy Association of Southern California, Inc., an organization dedicated to the promotion of gay, lesbian, and bisexual psychology, by supporting and serving the mental health professionals who work within the lesbian, gay, bisexual, and transgender community.

Summer, 2008

Editor:

Rev. Alexander Yoo, MA, MFTI

Co-Presidents

Liliane Quon McCain, MFT
Robbert Schalekamp, Psy.D.

Secretary

Fred Wilkey, Ed.D.

Treasurer

Fred Wilkey, Ed.D.

Board Members:

Sanie Andres, MFT
Liliane Quon McCain, MFT
Scott Musgrove, MFTI, Psy.D.
Robbert Schalekamp, MFT, Psy.D.
Travis Stobbe, BFA
Fred Wilkey, Ed.D.
Jason Wittman, MPS
Rev. Alexander Yoo, MA, MFTI

Program Committee:

Larry Hymes, MFT Intern

Membership Committee:

Communications Committee:
Sanie Andres, MFT

Community Service Awards Committee:

Development Committee:
Fred Wilkey, Ed.D.

Conference Committee:
Fred Wilkey, Ed.D.

Executive Director

Chuck Stewart, Ph.D.
ckstewar@sbcglobal.net
(310) 288-3465 (v)
(310) 838-6769 (f)
Box 34142
Los Angeles, CA 90034
www.LAGPA.org
LAGPA@sbcglobal.net

CLASSIFIED ADVERTISEMENTS, cont'd.

The **Classified Section** of the Progress Notes allows members and non-members to advertise available therapy services, employment and office space. This section is free for members and \$15 for non-members.

THERAPY

Partners of Trans Folk Support Group (Mid-Wilshire)

For partners (any gender) of MTFs, CDs, and FTMs.

- Is your spouse or partner going through a gender transition?
- Are you a gay, lesbian, or queer identified person partnered with someone whose transition is changing the dynamics of the relationship?
- Or perhaps a straight person totally new to or unfamiliar with anything trans who just happened to fall in love with someone of trans experience?

Whether your partner transitioned long before you ever met or is now questioning their gender, you have many questions and concerns, and you need other people to talk to.

The unseen but equally real side of gender transition, the partners of trans people go through their own parallel journey. Faced with your own identity challenges, you may feel isolated. You might find that you can't talk about this with your friends, especially if your partner is not out as trans. You certainly can't talk about your unique issues with your partner while you're trying to be lovingly supportive. Rest assured, you are not alone in your own "transition," and this group is here to help.

<http://www.alexanderyoo.com>
Intake required. Call for next start date. Time/Day TBD.
Please call (310) 773-3484 for more info. \$40/session; limited sliding scale. 6310 San Vicente Blvd., Suite 410, Los Angeles, CA 90048. Facilitator: Alexander Yoo, MA, MFTI, IMF 52075 (Supervised by Jan Reynolds, MFC 21785)

Gay Men's Growth Group (Studio City)

This is an ongoing men's group, which focuses on per-

sonal issues that lead toward better relationships with oneself and others. This is a group for serious minded men regardless of age, HIV or relationship status. Tuesday/Wednesday night in Studio City. \$35per session. Contact Sandy Kaufman, MFT at 818-761-4200

Gay Men's Group (Beverly Hills)

The Center for Cognitive Therapy in Beverly Hills is now running a Gay Men's Group on Mondays from 7:30-9PM. If interested, please call Joel Becker, PhD (PSY11680), 310-858-3831.

Ongoing Gay Men's Therapy Group

(Near Beverly Center)
Now accepting new participants! Meets every Wednesday evening from 8:00 to 9:30 PM; \$40 per session. Benefits of participation in an ongoing therapy group include: learning to directly and healthfully express feelings, building confidence and self-esteem, getting support for personal struggles and challenges, improving relationship skills, and gaining a sense of comfort in groups. Contact Mark Reina, MS, MFT Intern (IMF #49643), Supervised by Keith Rand, MFT (CA LIC# MFC32393; 310-366-5494; 8170 Beverly Blvd., Suite 204 (near the Beverly Center).

Gay Men's Psychotherapy Group

Psychodynamic group focuses on Gay empowerment, recovery from trauma and co-addiction, compassionate self-care, mindfulness, building intimate relationships. Fridays 6 PM, \$50. For more information, please call: Matt Silverstein, MFT, 310-842-6124 (License #MFC38474).

Mixed Groups

Mixed psychotherapy groups for well functioning men and women with a focus on relationship, intimacy, sexual, family, and career issues. Yalom model. Monday and Wednesday evenings led by Raymond Bakaitis, Ph.D. For more information, please call 310-841-6870.

Social Anxiety Group

This group will be making use of the latest empirically validated treatment for social anxiety. The group will be mixed (both gay, lesbian and straight clients) and time limited to 10-12 sessions. Contact Joel Becker 310-858-3831.

Emotional Regulation Skills Group

This group that is based on the work of Marsha Linehan, Ph.D. with patients who have the diagnosis of Borderline Personality Disorder. It is appropriate for all clients who have problems in this area, which may include patients in a wide range of disorders including substance abuse, etc. This group is adjunctive and the client must have a primary therapist who will remain in the picture as "therapist of record." Contact Joel Becker 310-858-3831.

Women Over 40

Support and process group intended to allow women over 40 years of age to discuss coming out, making new connections, and more. Married and unmarried women are welcomed. Wednesday nights from 7:30 PM to 9 PM. \$35/session. Contact Emily Moore at 626-793-1078.

Ongoing Gay Men's Therapy Group

(Pasadena)
Great group for therapists. Wednesday night group (7:30 pm to 9:00 pm) currently has openings. The fee is \$45. The group works to understand how they are relating within the group and how that is reflected (or not) in relating outside the group. Career blocks, fears, anger, the addictive process, and self-esteem issues are also part of our focus. Therapist uses primarily psychoanalytically oriented techniques and has a certificate from the Institute of Contemporary Psychoanalysis. Contact Roger Winter, MA, MFT (626) 440-9898 x2. (MFC28821)

EMPLOYMENT

Psychotherapy Bookkeeper Position

Volunteer!

Make LAGPA YOUR Cause

Classified Ads continued from previous page

Must be able to add existing client files to software program called "Therapist Helper." Call Mike Fatula MFT at 323-876-8861 OR 323-422-9433 business cell phone. (I am live on business cell phone at 5 minutes before any hour 10AM-10PM Mon-Fri).

EDUCATION

Total Wellness! Workshops Transgender/Gender Awareness and Health

GenderQueer Revolution presents Total Wellness!, a collaborative gender health series and speakers bureau for providers and community members alike, offers educational opportunities for those seeking to increase competency w/ transgender/gender awareness/LGBTIQ issues/populations/clients/clinical issues. National, global experts in mental health, medicine, spirituality, community health w/ over a century of speaking/tenured experience. Gender diversity experts and pioneers. See www.genderqueerrevolution.org for past and upcoming lectures and organizational consultation and to inquire about scheduling for your organization.

Transgender Consultation

Have a desire to work with transgender, genderqueer, gender-diverse, or other individuals and communities? Need to increase your cultural and clinical competency? A leading Gender Diversity Clinician and Applied Community Psychology Specialist, Alexander educates mental health and medical providers, businesses, institutions, community organizations, government bodies, and educational systems on gender issues and administrative practice. A nationally recognized author and educator in print and on radio, film, and television, he provides sensitivity, cultural competency, and EEO Compliance training as a private organizational development consultant and offers diverse peer consultation and psychotherapeutic services. As a Community Psychology Specialist, he focuses on person-environment interactions and the ways

larger, societal, and systemic factors impact upon individual and community health and wellness. (310) 773-3484 www.alexanderyoo.com

OFFICE SPACE

West Los Angeles

Charming courtyard building on Westwood Blvd., just south of Wilshire. Bright and beautifully carpeted and furnished. Call light system. Private exit. Collegial atmosphere. Part time or half time. Call Elaine Schulman 310-475-0674.

West Los Angeles

Beautifully decorated, windowed, freeway close, disabled access, call lights, separate entrance/exit, security building. Available AM's every day, all day Thursday and Saturday. Contact Renee R. Sperling, LCSW at 310-470-3450.

West Hollywood

Newly remodeled, beautiful, quite, F/T or P/T psychotherapy office space in 2 office suite in centrally located professional building in the heart of West Hollywood. Office is newly painted and carpeted with soundproofing. Separate, enclosed waiting area with call light system. Off-street parking available. One office is unfurnished and available full-time. One office is furnished. Both offices have windows overlooking lots of greenery. Gay affirmative practice and environment. Rent varies according to usage. \$300/day per month P/T and \$1000 FT. For more information, please contact Matthew Silverstein, PhD, MFT. 310-842-6124 or msilversteinmft@aol.com

West Hollywood

Prime therapy office for evenings and weekends. Beautiful space is available on Mondays through Thursdays evenings from 6PM to 9PM or 6PM to 10PM, and all day Friday, Saturday and Sunday. This French-windowed corner office is elegant and tasteful; furnished with antique oak wood furniture, rich brown leather couch/chair, and warmly painted walls. It also has a desk and a consulting area

which makes it more spacious. There is a shared waiting room and a copier/refrigerator room. Friendly colleagues. High-end security building on designer row. Other offices within the building consist of psychotherapists, psychiatrists and writers. Street parking is free on Robertson after 6PM. If interested please call Paul Oberon, PsyD at 310-659-0509. Required blocks of time: 6PM to 9PM or 6PM to 10PM. Monday/ Tuesday/ Wednesday/ Thursday or 4 hr blocks for Fridays through Sundays, (example 9AM to 1 PM or 1:30PM to 5:30PM); \$25/hour (non-negotiable).

West Hollywood/San Fernando Valley

Quiet Garden Courtyard of therapists, designers, and writers near Cedars-Sinai and Thaliens. Also office space on Ventura Blvd. near Laurel Canyon (Studio City).

- Quiet, garden courtyard; one story building; 24/7 access & AIR
- Windowed, private waiting room; sound-proofing & call-light systems
- Windowed & skylighted private therapy office
- Separate entrance-exit; separate restrooms for clients & therapists
- High vaulted wooden ceiling/new wood window blinds
- Utilities included with reasonable rent; private, covered, well-lit parking
- Easy canyon access to San Fernando Valley
- Recently remodeled to psychotherapy specifications Reasonable rates (utilities included). Call Mike Fatula at 323-876-8861.

Beverly Center

Part-time mornings and Friday-Sunday. Quiet small secured building near Beverly Center, 24/7 access, private climate control, windowed charming comfortable large furnished office, good size for groups, shared waiting room with call light, sound proofed, plenty of parking (free or metered), utility room with fridge, micro,

copier, printer, file drawers. Call Steve Kadel 310-228-3676.

West Hollywood

Professional furnished office for rent. To share with psychotherapist.

- NOW \$650/month, immediately available.
- Beautifully furnished with antiques and southwest flair. Ok to change decor.
- Fabulous 15' x 20' large inner office w/ private corridor exit.
- Share reception area [11' x 12']
- Wall to wall carpet.
- 8' x 10' west window faces sunsets and tops of trees.
- Security building with telephone access from the street.
- Any hours available 24/7 except when daytime on Mondays and Thursdays.

Good credit needed. Great for an established quiet professional business. Please call 310-455-3232 during business hours. 8235 Santa Monica Blvd at Harper, NE Corner.

Studio City / Valley Village

Charming quiet garden setting office with private waiting room, bathroom, and kitchen. Bright, windows that open, air conditioning, close to freeway, and free parking. Available part-time. Please call Dr. Stacy Berlin (310) 442-6466.

Got Something to Advertise —Then use the Classifieds to reach hundreds of mental health professionals. Placing an ad is **free** to members.

NOT A MEMBER OF LAGPA?

Use this application form to join or go to our website at www.LAGPA.org and complete the online application form.

LAGPA MEMBERSHIP APPLICATION

NAME _____

MAILING ADDRESS _____

CITY _____ STATE _____ ZIP _____

BUS. PHONE _____ HOME PHONE _____

E-MAIL (most important) _____

DATE OF APPLICATION _____

MEMBERSHIP CATEGORY (Check One)

- ☐ **\$ 105 Regular:** A currently licensed mental health professional.
☐ **\$ 105 Associate:** Individuals interested in the field of psychotherapy but who are neither students nor interns nor licensed professionals.
☐ **\$ 50 Student:** Unlicensed students and/or interns earning less than \$ 20,000 annual income.
☐ **\$ 50 Retiree:** Individuals who were once practicing mental health professionals, now retired and no longer working.
☐ **\$200 Institutional:** Organizations interested in the mission of LAGPA and wanting to support that mission through financial sponsorship.

METHOD OF PAYMENT

Please Check One: ☐ Check (payable to: LAGPA) **OR:** ☐ VISA ☐ Mastercard ☐ American Express

Card Number _____ Exp. Date _____

Name As It Appears On Card _____

Authorized Signature _____

MAIL COMPLETED APPLICATION

TO: LAGPA
PO Box 34142
Los Angeles, CA 90034

OR, if paying by credit card, you may:

FAX: 310-838-6769 Email: LAGPA@sbcglobal.net

LAGPA MEMBERSHIP BENEFITS

- Mailings to all LAGPA events
- Reduced registration fees for LAGPA events
- Annual LGBT Psychotherapy Conference
- Social Events
- Membership Directory
- Web Site www.lagpa.org
- Academic Forums
- Professional Women's Events
- CEUs for MFTs, LCSWs, and Psychologists
- Networking opportunities with other professionals
- Resource Directory
- Quarterly Newsletter "Progress Notes"

CALENDAR OF EVENTS

AUGUST

- AUGUST
Membership Drive
Annual Membership Drive.

SEPTEMBER

- SEPTEMBER 7, 12 Noon to 4 PM
Summer Social
Come join the fun with LAGPA and SCLMA. Pool party with lots of good food and drinks. Free to members.

OCTOBER

- OCTOBER 18, ALL DAY
LACPA Convention:
Come help staff our booth at the LACPA Convention.

NOVEMBER

- Date - TBD
Women's Series Educational Forum:
Details being coordinated now.

DECEMBER

- Date - TBD
Winter Social:
Details being coordinated now.

JANUARY

- Date - TBD
Ethics Workshop conducted by Dr. Lawrence Hedges:
Details being coordinated now.

MAY/JUNE

- Date - TBD
Annual Conference:
Details being coordinated now.



About LAGPA

The Lesbian and Gay Psychotherapy Association of Southern California, Inc. (LAGPA), was established in 1992 as an organization of mental health professionals interested in gay, lesbian, bisexual and transgender clients.

Members of LAGPA are actively involved in expanding the role of psychologists, psychiatrists, social workers, and marriage and family therapists who serve the greater gay community of Southern California. While LAGPA is

oriented towards mental health professionals, individuals who desire to join LAGPA are not required to be a licensed psychotherapist. ▼

POLICY FOR MAILING LISTS AND FLYERS

LAGPA does not sell or give out its mailing list (in any form) to any person, group or organization. If you would like to send a mailing to the membership you must provide enough copies of the item to be sent folded, stamped and ready to mail. LAGPA will run address labels and place them on the item to be mailed at a board meeting. Therefore, your materials must be received by LAGPA no later than one week prior to the next board meeting as indicated on the web site or in the newsletter, for them to be mailed in a timely fashion. If you want to do a separate mailing you must give us 10 open envelopes with the material you are mailing so we may review it. Rates for this type of service are: members \$125.00 per mailing; non-members \$175.00 per mailing. We strongly suggest you place an ad in the P.N. rather than creating a separate mailing.

As the LAGPA Board is all volunteer, and responsible for creating, collating, folding, labeling, stamping and mailing all newsletters and other correspondence throughout the year, we cannot accommodate the insertion of stand alone flyers into the newsletter or conference materials. Unless, or until, there is a full complement of board members and volunteers to assist on various committees, all flyers must appear as ads in the newsletter and/or conference brochure. Member and non-member rates are listed in the P.N. and on the web site at www.LAGPA.org. Members may bring flyers to LAGPA events and place them on tables where participants can pick them up.

The Board reserves the right to refuse to mail, include in the newsletter or display any material it deems inappropriate or offensive to its membership, or in direct conflict/opposition to the purpose/ mission statement of the organization. To engage in any of the above or for more information please contact our administrative assistant, Chuck Stewart. The purpose of a newsletter is to provide specialized information to a targeted audience. Newsletters can be a great way to market your product or service, and also to create credibility and build your organization's identity among peers, members, employees, or vendors.

First, determine the audience of the newsletter. This could be anyone who might benefit from the information it contains, for example, employees or people interested in purchasing a product or requesting your service. You can compile a mailing list from business reply cards, customer information sheets, and business cards collected at trade shows, or membership lists. You might consider purchasing a mailing list from a company.

Next, establish how much time and money you can spend on your newsletter. These factors will help determine how frequently you publish your newsletter and its length. You should publish your newsletter at least quarterly so that it's considered a consistent source of information. Your customers or employees will look forward to its arrival. ▼

NEWSLETTER POLICY

Article Submission

Your articles are welcomed and solicited, and will be published on a space available basis. Please send a copy of your articles, typed and double-spaced, to

LAGPA
Progress Notes
PO Box 34142
Los Angeles, CA 90034

You may also email your articles to ckstewar@sbcglobal.net. This newsletter is mailed to each member and may be made available to non-members by requesting copies either through mail (to the address above), or by calling 310-838-6247.

Publishing Schedule

Advertising and articles are due no later than the following dates:

	Due Date	Pub. Date
Summer		
Fall	8/15	9/1
Winter	11/15	12/1

Classified Advertisement Rates

Members	FREE
Non-member	\$15.00

Display Advertisement Rates

Size	Member	Non-mem.
1/8 page or business card	\$20.00	\$30.00
1/4 page	\$40.00	\$50.00
1/2 page	\$70.00	\$90.00
Full page	\$90.00	\$125.00

This includes business cards, advertisement for upcoming events you are producing, personal promotion, or anything that you may want members to be aware of.

Mechanicals

Size	
Business Card	3.5" w x 2" h
1/8 page	
Horizontal	3.7" w x 2.37" h
Vertical	1.82" w x 4.8" h
1/4 page	
Horizontal	7.5" w x 2.4" h
Vertical	3.7" w x 4.8" h
1/2 page	
Horizontal	7.5" w x 4.8" h
Vertical	3.7" w x 9.75" h
Full page	7.5" w x 9.75" h

Become a Board Member

Join The Excitement

In this issue of *Progress Notes*...

- ▶ Co-President Report
- ▶ Welcome, New and Returning Members!
- ▶ Executive Director Report
- ▶ Article by Doug Sadownick
- ▶ Summer Social Announcement
- ▶ Photos from LAGPA's 14th Annual Conference
- ▶ Classified Ads and Job Announcements
- ▶ Calendar of Future Events

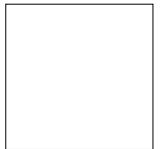
**JOIN LAGPA
Don't Miss
Out on Great
Social Events**

**Summer Social Pool Party!
Sunday, September 7th, 12-4PM!**

**Visit us on the web.
www.LAGPA.org**



PO Box 34142
LOS ANGELES, CA 90034



CUSTOMER NAME
STREET ADDRESS
Address 2
CITY, ST ZIP Code

E-mail
LAGPA@sbcglobal.net

We're on the Web!
See us at:
www.lagpa.org
310-288-3465
310-838-6769 (f)