



# Lesbian & Gay Psychotherapy Association

www.**LAGPA**.org

**6CE**  
CREDITS

APA | BBS



LAGPA is approved by the  
American Psychological Association to sponsor  
continuing education for psychologists.  
LAGPA maintains responsibility for  
this program and its content.

## Twenty-First Annual LGBTQI Psychotherapy Conference

**NOW!**  
**Register Online**  
**LAGPA.org**

**Greg Cason, Ph.D.**  
Keynote Speaker



*"Dr. Greg" from the Bravo series  
LA Shrinks*

**Sunday, November 13, 2016**

Hosted and Sponsored by --  
**Antioch University Los Angeles  
& The LGBT Specialization**

**Lesbian and Gay Psychotherapy Association of Southern California, Inc.**



# Acceptance. NO EXCEPTION.

**Antioch University Los Angeles offers a pioneering graduate level program training the next generation of LGBT-Affirmative psychotherapists and activists.**

- The LGBT Specialization in Clinical Psychology founded two clinics:
  - Colors Youth Counseling program at the Antioch University Counseling Center serving LGBTQ youth under 25 and their families.
  - Antioch Alive in partnership with Being Alive serving HIV-impacted communities.

*We invite you to explore our intersections between social justice and LGBTQ resilience and liberation.*

ANTIOCH  
UNIVERSITY  
LOS ANGELES

The LGBT Specialization  
in Clinical Psychology

[antiochla.edu/lgbt](http://antiochla.edu/lgbt)



## Keynote Speaker: Greg Cason, Ph.D.

### “Dr. Greg” from the Bravo series *LA Shrinks*

Dr. Greg Cason is best known as “Dr. Greg” from the Bravo series *LA Shrinks*, the controversial docu-series that showed what happens in the therapist’s office and in his real life. He appears regularly as a psychological expert on *The Nancy Grace Show* and has also appeared a large variety of TV programs including *The Jeff Probst Show*, *The Tyra Banks Show*, *Extra*, *Entertainment Tonight*, *Access Hollywood*, and several news features. His expertise was also featured in documentaries specifically about the gay community such as *The Butch Factor*, *The Adonis Factor*, and *The Gift*. Most recently, he provided expert psychological analysis in *The Secret Tapes of the O.J. Case: The Untold Story*. His writing includes an often-irreverent psychology column for the gay community called

“Off The Couch” in print and on-line versions of *Frontiers* magazine and his sometimes-controversial views have been featured about in *The Huffington Post*, *The Advocate*, *People*, and several other publications.

Coming out and growing up professionally in the age of AIDS, Dr. Greg Cason devoted much of his early work to the communities affected by HIV including working to break political barriers to HIV-funding and legislation on the national level with Democratic political consultant David Mixner then moving on to be the National Coordinator for the very first National Coming Out Day. He then turned his energy to fulfill his childhood desire to be a psychologist. He started doing sex and drug abuse research at UCLA, completed a Master’s at Cal State Northridge, and went to the University of Houston to receive a PhD as the first openly gay member of his class. While there he took a position as a therapist and educator at the only LGBT counseling center in southern Texas, Montrose Counseling Center, and there doing his own research in identification of domestic violence in the LGBT community, male rape, and completing a dissertation focused on changing homophobia in mental health providers. He also completed a post-doctoral fellowship in HIV Mental Health at Harbor-UCLA Medical Center and worked for several AIDS organizations including Shanti and APLA where he headed up the mental health program among other things. Dr. Cason currently teaches in the psychiatric residency at UCLA and is a licensed psychologist and Diplomate in the Academy of Cognitive therapy with a private practice in Los Angeles specializing in cognitive behavioral therapy and the LGBT community.

## 21<sup>st</sup> Annual LGBTQI Psychotherapy Conference

The Twenty-First Annual LGBTQI Psychotherapy Conference presented by LAGPA presents academic research and expertise on LGBTQI issues and concerns to professionals working with these clients in their psychotherapy practices. This one-day Conference meets the educational needs of psychiatrists, psychologists, LCSW’s, MSW’s, MFT’s, CAADAC Certified and Registered addiction professionals, interns, and students of psychology. LAGPA, as a continuing education provider, meets the requirements established through the American Psychological Association (APA) and Board of Behavioral Sciences (BBS). LAGPA is approved by the American Psychological Association to sponsor continuing education for psychologists. LAGPA maintains responsibility for this program and its content. LAGPA is the only organization to offer APA CEs on LGBTQI issues.

### ----- Conference Sponsors -----

**Antioch University Los Angeles** is a progressive, learner-centered university, a place where individual spirit thrives and community grows. Our core values of social justice, service to community, and lifelong learning comprise the heart of our undergraduate and graduate degree programs. The Master of Arts in Clinical Psychology’s LGBT Specialization is an innovative program designed to provide comprehensive theoretical and practical preparation for students who wish to provide effective and compassionate treatment to lesbian, gay, bisexual, and transgender clients. Through community partnerships, the LGBT Specialization has launched Colors, a free counseling center for LGBTQ youth under 25, and Antioch Alive, which provides counseling and other services to those living with HIV/AIDS. The LGBT Specialization has founded two clinics, Antioch Alive, to target the HIV community, and Colors LGBTQ Youth Center ([www.colorsyouth.org](http://www.colorsyouth.org)), the LGBTQ Youth Community. For more information, Contact Director Dr. Douglas Sadownick ([dsadownick@antioch.edu](mailto:dsadownick@antioch.edu)).

It was 2012 when Brad Lamm and his partner in **Breathe Life Healing Centers**, Deb Hughes, began dreaming-up a trauma-informed, insurance-friendly treatment program. They yearned to make a place that operated on a deeper level than just LGBTQ-friendly. Like themselves, they saw a place with queer DNA. In recovery for over thirty years, Deb knows the impact of orientation on one’s journey, and as a gay man in long-term recovery, Brad knows how safety and stabilization allow for safe trauma work to occur. Breathe supports mind, body, and spirit. Programs focus on substance use, dual-diagnosis, and trauma and eating disorders. Breathe: (800) 929-5904 [www.BreatheLifeHealingCenters.com](http://www.BreatheLifeHealingCenters.com)

**L.A. Care Health Plan** is committed to providing high quality health care to all Los Angeles County residents. With more than two million members in six product lines, L.A. Care is the nation’s largest publicly operated health plan.

**Paradigm Malibu** provides compassionate, expert care for 12-18 year old adolescents seeking to more effectively manage their anxiety, depression, trauma and substance use. We provide unlocked 30-45 day treatment that helps adolescents return to their community & therapeutic team through daily individual therapy, 35 hours of groups and 5 hours of family therapy, skills & support. Our specialized services for LGBT+ identified youth provide a safe and sophisticated haven for understanding, affirmative care and expert treatment. Contact Information: Web: [paradigmmalibu.com](http://paradigmmalibu.com) Phone: 855-780-TEEN.





**Susan J. Leviton, MA, LMFT**

Lic. #MFC45199

16055 Ventura Blvd., Ste. 717  
Encino, CA 91436

www.susanlevitonmft.com  
susan@susanlevitonmft.com  
818-788-7101

Individuals, Couples, Families  
LGBT+

## TWIN TOWN Treatment Centers

866 594 8844

www.twintowntreatmentcenters.com

Intensive Outpatient and Day Treatment  
Adult and Adolescent Substance Use Disorders

Los Alamitos, Mission Viejo, North Hollywood,  
Orange, Torrance, West Hollywood

Joint Commission Accredited

State Certified

HMO/ PPO/Insurance Contracted

## ★ HELP HEAL THE ★ HIDDEN WOUNDS OF WAR

### MENTAL HEALTH PROFESSIONALS: THE SOLDIERS PROJECT NEEDS YOU!

The Soldiers Project needs licensed mental health professionals to volunteer their time to see post 9/11 Veterans and their loved ones in Southern California. We will provide you with training on Military Culture, PTSD, and TBI, in addition to **FREE** continuing education opportunities throughout the year.

Join The Soldiers Project's network of mental health professionals by going to [www.thesoldiersproject.org](http://www.thesoldiersproject.org) and submit an application online or call **818-761-7438** to get started.

The Soldiers Project is a 501 (c)3 non-profit organization that has been providing critically needed mental health services for over 10 years to Post 9/11 Veterans and their loved ones.



[www.TheSoldiersProject.org](http://www.TheSoldiersProject.org)



**The Soldiers Project**  
Healing the Hidden Wounds of War



**L.A. Care Health Plan**  
*Salutes the*

## Lesbian and Gay Psychotherapy Association

*for its commitment  
to serving the **LGBTIQ**  
community in Los Angeles County.*



**L.A. Care**  
HEALTH PLAN®

[www.lacare.org](http://www.lacare.org) 1-888-4LA-CARE



## Conference at a Glance

8:00-8:30 Registration  
8:30-9:00 Morning Mingle  
9:00-10:30 **SESSION ONE** (see below)  
10:30-10:45 Comfort and Networking Break

10:45-12:15 **SESSION TWO** (see below)  
12:15-2:15 Keynote and Luncheon  
2:15-4:15 **SESSION THREE** (see below)

CE certificates will be distributed immediately after last session.

### 9:00-10:30 | Concurrent Workshops 1A, 1B, 1C, 1D

#### 1A. From Suicide to Finish Lines: Living Transgender with Bipolar and Neurological Illness

In this session, author and award winning speaker Nate Cannon will infuse education and experience to discuss intersectional identity and the complexities of transitioning as a person living not only with mental illness, but with a painful and progressive neurological disorder. From dysphoria and suicide to marathon triumphs of human endurance, Nate's story of hope and recovery will both educate and inspire all those who identify with or work with the LGBTQ community, co-occurring disorders, or medically complex cases.



**Nate Cannon**, Speaker and Author of *Running on a Mind Rewired*. Nate Cannon presents regularly about his experiences being transgender and in recovery, living with both mental illness and an unseen physical disability. A policy matter expert and board member for numerous LGBTQ organizations, Nate is currently finishing his second memoir, addressing the complexities of transition.

#### 1B. Sexual Behavior and Risk Factors of LGBTQ Youth.

The support and affirmation of LGBTQ-identified students have increased substantially in the past decade. Nevertheless, risk factors for LGBTQ youth continue to be significantly higher than those of their non-LGBTQ peers. This workshop will review data from the California Youth Risk Behavior Survey and studies on LGBT youth in out-of-home placement regarding the subpopulation of LGBTQ youth who are engaging in potentially risky sexual behaviors through online formats, sexting, survivor sex, and participation in the sex trade.



**Judy Chiasson**, PhD, is a Coordinator in the Human Relations, Diversity and Equity of the Los Angeles Unified School District. She advocates for safe campuses for students, staff and families by creating policies, practices and curriculum that are affirming of sexual orientation and gender identity. Dr. Chiasson is recognized national spokesperson for LGBTQ concerns in K-12 education.



**Timothy Kordic**, Los Angeles Unified School District (LAUSD), Health Education Programs, HIV/AIDS Prevention Unit. After being a classroom teacher, he began working in prevention-education. He started in violence-, alcohol-, tobacco- and other drugs- prevention-education. He is in charge of comprehensive sexual health and HIV prevention-education for his district. Also, he manages the LAUSD HIV/AIDS Prevention Unit and monitors the surveillance on student health behaviors.

#### 1C. Bisexualities in the Clinical Setting



Bisexuals face a double stigma, belonging to neither the heterosexual majority nor the monosexual norm. Understanding the origins of biphobia and to whom and when it is applied has important real world implications. This workshop will present the results of three studies based on an ethnocentric framework that elucidate these issues and discuss how to best treat individuals in a clinical setting.

**Shani Habibi**, PhD, is an Assistant Professor at Mount Saint Mary's University and a licensed Clinical Psychologist. Dr. Habibi's main research interests are in the areas of cultural differences with a focus on gender. She is trained as a Cognitive Behavioral Therapist and currently owns a private practice in Encino.



**Jared Anderson** is a student in the *¡Enlaces!* (Spanish-speaking) marriage and family therapy program at Mount Saint Mary's University. He worked at a group home for abused and neglected children for ten years before returning to school. He plays music, writes, and does photography in his spare time.

**SHANI HABIBI, PhD**

PSY26779

LICENSED CLINICAL PSYCHOLOGIST

DRSHANIHABIBI@GMAIL.COM

WWW.DRSHANIHABIBI.COM

16661 VENTURA BLVD SUITE 226A

ENCINO, CA 91436

818.307.6020 323.510.4945



**HARRINGTON PARK PRESS**

LGBTQ & DIVERSITY Textbooks, Scholarly  
and Professional Publications

## 1D. Skills Training in LGBT Affirmative Substance Abuse Treatment

This workshop will examine issues that perpetuate substance use disorders among LGBTQ persons. We will look at the intersection of substance use, sexual behavior, and HIV/STI transmission to understand substance abuse treatment as a form of HIV prevention. We will focus on interacting aspects of diversity that drive risk for substance use and consequent health conditions, and review assessment/intervention techniques that affirm LGBTQ clients. This course will provoke discussion of controversial ideas, include clinical vignettes and role-plays, and provide basic skills that serve as a foundation for working in the fields of substance abuse prevention and treatment.



**Peter S. Theodore, PhD**, is a licensed, practicing clinical psychologist and associate professor in at Alliant International University. He previously directed a methamphetamine abuse treatment clinic for gay/bisexual men. Areas of expertise include behavioral medicine, the intersection of substance abuse and HIV, LGBTQ Affirmative Therapy, and cognitive-behavioral therapy addressing mood/anxiety/trauma.



**Cristina L. Magalhaes, PhD**, is a licensed clinical psychologist in private practice and associate professor of clinical psychology for the Clinical PsyD Program at Alliant International University, Los Angeles. She is also acting director of Alliant's Rockway Certificate in LGBT Studies. Areas of clinical, teaching, and research interests include sexual orientation and gender diversity, immigrant/sojourner experiences, stress/anxiety/trauma, and health promotion.

### Lesbian and Gay Owned + Operated



#### EATING DISORDERS

##### Binge Eating, Bulimia + Anorexia

Breakfree @ Breathe equips you with a life-sustaining network of good, healthful changes to extend life, improve health and help clients get better.

- Medical + Nutritional Stabilization
- Custom Crafted Meal Plan
- Culinary Interventions
- Cooking Classes + Supermarket Outings
- Organic Farm on Campus
- Client Centered Exercise + Movement

**breathe**

Life Healing Centers

800-929-5904

#### SUBSTANCE USE DISORDERS

##### Alcoholism, Drug Addiction, + Co-Occurring Disorders

Regardless of what challenges you may be facing, our Substance Use Disorder Program provides superior clinical, educational and emotional support in the early stages of your recovery. With dynamic spiritual-life focused workshops, we encourage a deeper conversation:

- Solidifying Recovery
- Redefining Center
- Engaging in Feeling Feelings

**Insurance Accepted**

[BreatheLifeHealingCenters.com](http://BreatheLifeHealingCenters.com)



## 10:45-12:15 | Concurrent Workshops 2A, 2B, 2C, 2D

### 2A. Vanilla, Meet Kinky: Helping Clients Navigate Differing Sexual Interests

This workshop will help clinicians become informed resources for clients who are attempting to navigate a relationship with differing sexual interests, particularly kink and non-monogamy. We will discuss how to guide your clients in self-reflection in understanding their partner's needs as well as discussing the resources and education you can provide as a kink-informed clinician.



**Georgia Hill**, MA, MFT Intern. Georgia Hill is a Queer, sex-positive, kink-aware therapist in San Francisco who works with couples and individuals around a broad range of issues. She has over 7 years of personal and professional experience with kink and non-monogamy.

### 2B. Uranian Eros: The Archetype of Homosexual Love in the Clinical Setting

A panel discussion with four members of the Institute for Uranian Psychoanalysis will examine the therapeutic implications of psychologist Mitch Walker's gay-liberationist, Jungian conceptualization of Uranian Eros as a "divine" presence within homosexual desire which inspires and directs personal development. The panelists will highlight how Walker's theory draws on Plato's exploration of same-sex love in his *Symposium*, as well as psychoanalytic and Jungian concepts and practices, especially the techniques of amplification and active imagination for personifying that love as a glorious, sexy, amorous "being" within. The workshop presenters will demonstrate how relationship with such a positive inner figure can be most substantively cultivated through transformative engagement with the psyche's shadow side of toxic shame and homophobic childhood trauma. This dynamic healing process can be meaningfully envisioned as a "heroic journey" toward golden union with Uranian Eros and the realization of our same-sex-loving creative potentials.



**Roger Kaufman**, MA, LMFT, is a founding member of the Institute for Uranian Psychoanalysis, and a facilitator for the Institute's Self-Development Training Program. He is also a gay-centered psychotherapist in private practice, and his articles on gay archetypal psychology have appeared in numerous books and journals.



**Dustin Kerrone**, MS, LMFT, is Director of the Sexual Health Program at the Los Angeles LGBT Center. He is a member of the Institute for Uranian Psychoanalysis and a facilitator for the Institute's Self-Development Training Program. He is also a gay-affirmative psychotherapist in private practice.



**Chris Kilbourne**, MA, LMFT, is a founding member of the Institute for Uranian Psychoanalysis, and facilitator for the Institute's Self-Development Training Program. He has been a psychotherapist for 28 years and has facilitated hundreds of gay-centered workshops and groups.





**Douglas Sadownick**, PhD, LMFT., is the founder of the LGBT Specialization in the Master's of Clinical Psychology program at Antioch University, and a founding member of the Institute for Uranian Psychoanalysis, as well as a facilitator for the Institute's Self-Development Training Program. He is also a published author of many articles and books on gay psychology.

### 2C. LGBTQ+ in Communities of Color: Familial Homophobia, Horizontal Hostility, and Other Challenges of Being QPOC

Being LGBTQ+ is challenging enough...but being queer and a person of color (POC)? Double-whammy! Members of multiple, marginalized groups can face difficulties in negotiating their conflicting identities. In many immigrant/ethnic communities (i.e. African, Latino, Asian, Middle Eastern), queer people are invisible, denied, or worse—often making QPOCs fear consequences of "coming out." This workshop provides an overview of issues facing these clients and best practices for multicultural competent clinicians working with this population.



**Stara Shakti**, MFTI is a QPOC herself and passionate about serving the complex needs of QPOCs. She is a first-generation, Indian-American, female, queer, activist-therapist. She recently graduated from AULA with her Masters in Clinical Psychology and is starting her private practice internship with Dr. Lani Chin in Westwood, CA.



**Timothy Kordic**  
Advisor

Los Angeles Unified School District  
Health Education Programs,  
HIV/AIDS Prevention Unit

Tel: 213.241.3519  
Fax: 213.241.6956  
timothy.kordic@lausd.net  
www.aidspreventionlausd.net

333 S. Beaudry Ave., 25<sup>th</sup> Floor  
Los Angeles, Ca 90017

*Individual, Couples, and Sex Therapy*

**GEORGIA HILL, MA**  
REGISTERED MFT INTERN #78071  
SUPERVISED BY ANNIE SCHUESSLER, MFT #43865

538 HAYES STREET  
SAN FRANCISCO, CA 94102  
GEORGIAHILLMFT@GMAIL.COM  
415-937-0167



## 2D. Disclosure – Building the Tools for HIV+ Clients

Every day people living with HIV make decisions about when, where, why, how, and to whom they are going to disclose their HIV status. While there are undoubtedly benefits, voluntary disclosure still carries a number of potential negative ramifications. In this interactive workshop, clinicians will be invited to explore and share their thoughts and experiences about disclosure for themselves and the population they serve, as well as to consider and develop appropriate client strategies for engaging in safe, voluntary disclosure in various circumstances.




**John Sovec**, MA LMFT is a psychotherapist in private practice in Pasadena CA where he specializes in working with LGBT teens and their families during the coming out process. He is the clinical consultant for The Life Group LA as well as an adjunct faculty in the Post Modern program at Phillips Graduate University. John has spoken nationally on the topic of HIV disclosure including the US Conference on AIDS and the Gay and Lesbian Medical Association. He is also a regular contributor on LGBT issues for Good Therapy and Huffington Post Queer Voices.



**John Sovec**  
Therapy & Counseling

John@JohnSovec.com  
626.374.7046 | JohnSovec.com



**Cristina L. Magalhaes, PhD**  
Licensed Psychologist  
PSY 23830

---

711 E. Walnut Avenue ♦ Suite 201 ♦ Pasadena, CA 91101  
contact by phone: (954) 937-0240 or email: [magslhac@gmail.com](mailto:magslhac@gmail.com)  
<http://cristinamagalhaesphd.blogspot.com/p/about.html>



Los Angeles County  
Psychological Association  
**28TH ANNUAL CONVENTION**  
DoubleTree by Hilton, Culver City  
Saturday, October 15, 2016  
6.0 CE's maximum for the day

**JEFFREY PRAGER, PH.D.**  
will deliver the afternoon keynote address,  
*The Intergenerational Transmission of Trauma*



- Continental Breakfast
- 12 Morning Sessions
- Awards Luncheon
- Poster Session
- Reception/  
No-Host Happy Hour

Pre-registration available  
until **October 5, 2016**

Advertising, exhibiting, and  
sponsorships available at  
[lapsych.org](http://lapsych.org)  
**818-905-0410**



**ADDICTION**  
*Therapeutic*  
**SERVICES**  
Intensive Outpatient  
Program

**Mission/Vision**  
ATS is dedicated to an abstinence-based model of recovery. Our approach is whole-person-centered tending to the mind, body, and spirit. We believe in the power of human nature and respectfully meeting our clients where they are. We aspire to be an important chapter in their journey to becoming whole, healthy, and happy.

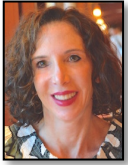
**ats-iop.com**  
**760-778-6120**



## 2:15-4:15 | Concurrent Workshops 3A, 3B, 3C, 3D

### 3A. Bodageless!: Bodacious and ageless body acceptance in gay male clients.

Scholars have indicated that gay men experience a significant amount of shame, low self-esteem, uncertainty, and fear around both their appearance and their aging. Further, scholars have noted such negative emotions for gay men within both the LGBT community and larger society. In response to the need for further expertise in this area, this discussion-based workshop will explore levels of body dissatisfaction and disordered eating among gay men and offer concrete implications for clinical practice. The presenters will facilitate a discussion with attendees and then present clinical best practices for working with body image concerns with gay male clients.



**Suzy Unger**, M.A. Candidate, MFT Trainee. Ms. Unger is a second-year student and an MFT trainee in the LGBT Specialization at Antioch University, Los Angeles. Her professional interests include clinical psychology, body image and body acceptance, and mental health and wellness for LGBTQI people.



**Theodore Burnes**, PhD, MEd., LPCC. Dr. Burnes is an Associate Professor and the director of the LGBT Specialization at Antioch University, Los Angeles. He is a licensed psychologist and a licensed professional clinical counselor (LPCC) in California. His professional interests include teaching and training in psychology and mental health and wellness for LGBTQI people.

### 3B. Intimate Partner Abuse and Violence between LGBTQIA clients: What do we need to know and do?

Intimate Partner Abuse and Violence (IPAV) affects 1/4 to 1/3 of LGBTQIA community members directly, and it affects us all indirectly. We need to know the signs to recognize and assess for IPAV in order to be optimally helpful. We also need to know how the dynamics of and effective interventions with IPAV are similar and different in LGBTQIA couples and heterosexual couples. And, of course, we need to know effective interventions. This workshop will use lecture, case presentation of both "abusers" and "survivors," and discussion to explore this topic.




**Kendall Evans**, MA, Licensed Marriage and Family Therapist. Director of Another Way – Stopping Violence and Abuse a Project of Open Paths Counseling Center. Kendall Evans co-founded Another Way: Stopping Violence and Abuse in 1987. Kendall Evans is a trans-woman. She sees clients who are in the LGBTQIA spectrum and provides general psychotherapy at Open Paths Counseling Center. Kendall trains and supervises interns at Open Paths and Another Way. She is Co-chair of the Association for Batterer's Intervention Programs and serves as training committee chair.

### 3C. The Erotization of Otherness

Freud revealed many of his dreams-including sexual ones about his patients. Ethel Pearson says few of us are yet ready to reveal our sexual fantasies. Interpersonal/relational approaches to reverie, the analytic third, and countertransference suggest that study of sexual fantasies may be important. Cross-cultural studies suggest that ethnic and sexual boundaries converge as ethnosexual frontiers in psychotherapy. Thinkers in the area of sex and erotics draw a sharp distinction between the energizing function of sex and the multitudinous forms of erotics. In relational psychotherapy, therapist and client must be alert to the different kinds of ethnicity and erotics embedded in their conscious and unconscious histories, identities, and fantasies. Dr. Hedges will review the literature on eroticism, sexual fantasy, and reverie, and how to go about raising our awareness of erotic fantasies, thoughts, and desires in order to enhance our therapy work while at the same time carefully avoiding the dangers of slippery slope. He will present a series of vignettes from his own psychotherapy practice illustrating the use of transference and countertransference erotic fantasies.



**Lawrence E. Hedges**, PhD, PsyD, ABPP is a psychologist-psychoanalyst in private practice in Orange, California, specializing in the training of psychotherapists and psychoanalysts. He is director of the Listening Perspectives Study Center and the founding director of the Newport Psychoanalytic Institute in Tustin, California.



**Kendall Evans, MA.**  
Licensed Marriage and Family Therapist  
Kevans3054@aol.com

5731 West Slauson Ave.  
Suite 175  
Culver City, 90230  
(310) 409-3859  
Fax / Other

**Open Paths Counseling Center**  
Another Way: Stopping Violence and Abuse

**LAWRENCE E. HEDGES, PH.D., PSYD., ABPP**  
Psychology - Psychoanalysis

1439 East Chapman Avenue, Orange, California 92866  
(714) 633-3933 lhedges7@gmail.com  
License # PSY3567 listeningperspectives.com

**www.BankruptYourStudentLoans.com**

Learn how you can discharge your student loans through bankruptcy.

Chuck Stewart, Ph.D. author

ISBN: 978-1-4259-2855-1



### 3D. Better Lesbian Sex and Intimacy! How Changing your Communication Style Can Improve Everything.

Do you want better sex and intimacy with your partner? Do you want to learn some skills to bring to a future relationship? Research has shown that improved communication skills between couples leads to more empathy, understanding, and forgiveness, which leads to more love, intimacy and sex! Join this interactive workshop where we will introduce the basics from Emotionally Focused Therapy, Cognitive Behavioral Therapy, John Gottman's research on communication styles, the 5 Love Languages, and destructive love addiction behaviors while addressing Lesbian and Bisexual Affirmative Psychotherapy, Lesbianphobia and the importance of the Lesbian erotic.



**Lauren Costine, PhD**, Licensed Psychologist, author, activist, feminist & founding member of The LGBT Specialization in Clinical Psychology at Antioch University Los Angeles. She is currently the Chief Clinical Officer at Convalo Health International the parent company of BLVD Treatment Centers and Reflections Recovery Center. She also founded the

LGBT-Affirmative Track at BLVD Treatment Centers – an intensive outpatient treatment centers located in Hollywood, West Los Angeles, San Diego and Portland. Dr. Costine has dedicated herself to the field of LGBT-Affirmative Psychotherapy & is a pioneer in Lesbian-Affirmative Therapy. Her first book: *Lesbian Love Addiction: Understanding the Urge to Merge and How To Heal When Things go Wrong* is available on Amazon. To learn more about the book please visit [www.lesbianloveaddiction.com](http://www.lesbianloveaddiction.com). Articles written by Dr. Costine have been featured in numerous mental health magazines, she has been featured on multiple radio shows including NPR and publishes a monthly written and video blog titled "Dr. Costine's Commentary." Her website is [drlaurencostine.com](http://drlaurencostine.com).



**Linda Santiman, MA** is a Licensed Marriage and Family Therapist. She provides individual and couple's therapy in a Los Feliz office. She also works for the Los Angeles LGBT Center counseling HIV positive clients. She has worked eclectically with clients depending on their needs and has utilized psychodynamically-based Jungian psychology, object relations, CBT, narrative,

motivational interviewing, family systems, feminist and LGBT affirmative approaches. She has cohosted the Better Sex and Intimacy! Workshop for the Women's 360 conference for the LA LGBT Center for two years.

Make a difference  
in people's lives.  
And your own.



We are proud to sponsor the  
21<sup>st</sup> Annual LGBTQI Psychotherapy Conference.

**USC** School  
of Social Work

[usc.edu/socialwork](http://usc.edu/socialwork)



**Nathan R. Cannon**  
Author and Public Speaker

[www.runningrewired.com](http://www.runningrewired.com)  
Cell: 612-418-3858  
[runningrewired@gmail.com](mailto:runningrewired@gmail.com)



**RUNNING**  
on a mind  
**REWIRE D**



Read

Like: [www.facebook.com/runningrewired](http://www.facebook.com/runningrewired)  
Follow: [www.twitter.com/runningrewired](http://www.twitter.com/runningrewired)



Intensive Outpatient Treatment  
All Major Insurances Accepted

**800-310-7700**





## Education, Research and Practice Fostering Enhanced Homosexual Self-Realization through the Development of More Authentically Depthful Gay Personhood

The Institute for Uranian Psychoanalysis was established by an alliance of gay liberation activists in 2005 to better foster the refinement and application of a rigorous depth-psychological approach to homosexual Self-realization affirming the profoundly meaningful, numinous, archetypal roots of same-sex romantic love, homosexual orientation, and modern gay personhood. Relationally applying a systematic symbolic analysis of gay-identified subjectivity and its enhanced homosexual individuation points toward a revolutionary second stage of gay liberation as it offers significant benefits potentially available to people of all sexual orientations, including in matters of personal growth and intellectual development. This approach is particularly focused on by the Institute's Uranian Psychoanalytic Self-Development Training Program.

Join us for stimulating monthly public meetings of the Uranian Psychoanalytic Club at Plummer Park in West Hollywood to learn more about the affirmative practice of gay-centered inner work and the Institute's Uranian Psychoanalytic Self-Development Training Program.

For more info, visit [uranianpsych.org](http://uranianpsych.org)  
or call (323) 692-9336



**Institute  
for Uranian  
Psychoanalysis**



*presents*



**FINDING  
freedom  
2017**

**January 13-15**  
Riviera Hotel | Palm Springs

Reserve EARLY for \$159 rate  
[LGBTQsymposium.com](http://LGBTQsymposium.com)

For more information,  
including sponsorship  
opportunities, please  
contact Renee Baribeau  
at 760-464.2138 or  
[Renee.Baribeau@frnmail.com](mailto:Renee.Baribeau@frnmail.com)

**18 CE's  
will be  
offered**

LAGPA is approved by the American Psychological Association to sponsor continuing education for psychologists. LAGPA maintains responsibility for this program and its content.



Sharing best practices in  
supporting the LGBTQ  
community with  
co-occurring disorders

### KEYNOTE SPEAKERS

**Brad Lamm, CIP, Founder, Breathe LHC**  
*Perfect: Finding Beauty in Imperfection*  
**Delene van Dyk, RN From South Africa**  
*Binaries & Boxes (or Not!) Understand Human Sexuality - Understand Life!*

#### Friday Night Movie

Screening: *Gen Silent*

Q&A with film maker **Stu Maddux**

**Philip T. McCabe, CSW, CAS, CDVC,**  
DRCC, NALGAP President

*Queer Health Advocacy  
Honoring Our Past, Creating Our Future*

**Beck Gee-Cohen, MA, LADC**

*The Not So Silent T:*

*Trans, Recovery & Social Justice*

**Robert Pease, PhD**

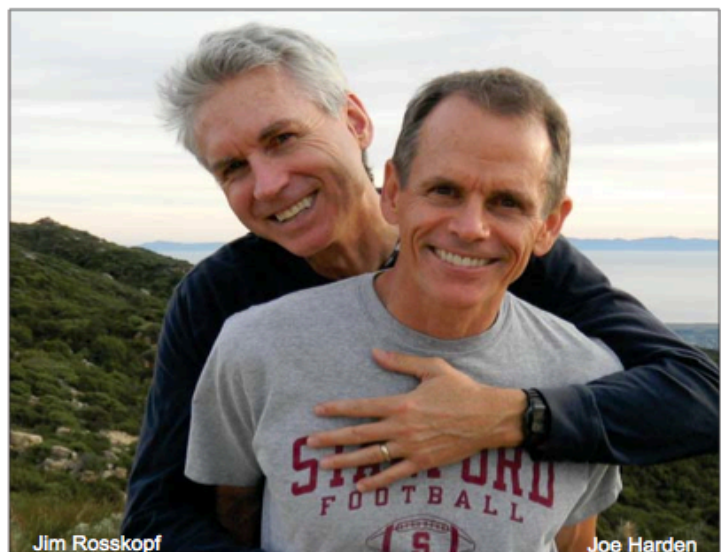
*Addiction vs. Spirituality:  
When Worlds Collide*

#### PRICING

Until 12/1/16 \$350 - After \$399

#### MORE INFORMATION

[LGBTQsymposium.com](http://LGBTQsymposium.com)



Jim Rosskopf

Joe Harden

Serving Our Community Since 1996

**S**ervices  
• **Web Design**  
adapts to tablets and smartphones  
• **Web Hosting**  
personal service and attention

**moonSlice**

**805.898.9267**  
[moonslice.com](http://moonslice.com)

# Registration Information

## CONTINUING EDUCATION

### CE CREDIT: 6 Hours

LAGPA is approved to provide Continuing Education Credits for Psychologists, Marriage and Family Therapists, Social Workers, and Nurses. The exact number of credits awarded is equal to the number of contact hours for each event and is specified on the Syllabus and the Registration Form.

- BBS CE Credits — Course approved for continuing education credit for LCSWs and MFTs as required by the California Board of Behavioral Sciences (BBS) provider # PCE 3992.
- APA CE Credits — LAGPA is approved by the American Psychological Association to sponsor continuing education for psychologists. LAGPA maintains responsibility for this program and its content.

## CONFERENCE LOCATION & PARKING

Conference will be held at Antioch University LA, 400 Corporate Point, Culver City, CA 90230. Parking vouchers will be given at the end of the conference to pay for parking.

## EXHIBIT SPACE

Those individuals, organizations, and businesses who would like an opportunity to exhibit or advertise at the conference should contact the LAGPA office at: LAGPA@sbcglobal.net

## REGISTRATION REFUND POLICY

All requests for refund must be made in writing and sent to: LAGPA, PO Box 34142, Los Angeles, CA 90034. Requests postmarked by October 30 will receive a full refund, minus a \$25.00 administrative fee. No refunds will be made after October 30, 2013.

## CONFERENCE DISCOUNTS FOR LAGPA MEMBERS

Current LAGPA members will save up to 25% on the cost of the Conference. Non-Members can receive these same benefits by becoming a member before the Conference. Simply visit LAGPA.org and become a member.

## PERSONAL RECORDING

Personal video or audio recording is prohibited.

## ACCESSIBILITY

### Restrooms

All restrooms located within the proximity of our conference activities will be open to all persons regardless of gender identity. The gender-neutral restrooms may also function as a family restroom or as a restroom for disabled persons. Information on the location of these facilities may be found in the final program materials.

### Gender and pronouns

Please be aware that some participants at our conference may present in different ways. Some people prefer gendered pronouns for themselves, an affirmation of their correct gender. Not everyone, however, identifies strongly (or at all) as masculine/male or feminine/female, or, their gender identify or expression may fluctuate. What is the appropriate pronoun to use? Using someone's name in lieu of gender pronoun can get tiresome and awkward, though that is how some individuals circumvent pronouns. Gender-neutral pronouns may be used in the same way as other pronouns, but do not imply a gender as "he" or "she" might. In any case, respect the other person's preference, regardless of presentation.

### Scent-Aware Policy

We at LAGPA want to create an environment in which everyone experiences the Conference as comfortably as possible. In keeping with this goal, we would like to keep the Conference space scent-aware to reduce the level of toxins for those with Multiple Chemical Sensitivities. Minimize your use of strongly fragranced products. Avoid adding unnecessary fragrances. If possible, use fragrance-free products. Be understanding if someone asks you to move, or if they get up and move. It may not be you, but the fragrance on your person.

More info:

<http://www.mcsrr.org> || <http://bit.ly/fragrancefreeBSG>

<http://vanessahuang.com/fragrance-free>

**NOW!**  
**Register Online**  
**LAGPA.org**

**www.LAGPA.org**

**NOW!**  
**Register Online**  
**LAGPA.org**

*Did you know?*

LAGPA is the **ONLY** organization to offer  
APA CE Credits on LGBTQI issues.



## About LAGPA

The Lesbian and Gay Psychotherapy Association of Southern California, Inc., (LAGPA), was established in 1992 as an organization of mental health professionals interested in the psychological well-being of lesbian, gay, bisexual, transgender, intersex, queer and/or questioning individuals.

### MEMBERSHIP INFORMATION

LAGPA membership benefits include discounts to all LAGPA events, including academic forums, social events, professional women's events, queer events, and the annual LGBTQI Psychotherapy Conference. In addition, members also receive LAGPA's tri-annual newsletter "Progress Notes," an LGBTQI resource directory, membership listing on the LAGPA website ([www.lagpa.org](http://www.lagpa.org)), and the online LAGPA membership directory. LAGPA is an accredited provider of continuing education for psychologists, licensed clinical social workers, and marriage and family therapists.

### ANNUAL MEMBERSHIP FEES

<b>\$120</b>	<b>Regular:</b>	A currently licensed mental health professional
<b>\$120</b>	<b>Associate:</b>	Individuals interested in the field of psychotherapy but who are neither students nor interns nor licensed professionals
<b>\$60</b>	<b>Student:</b>	Unlicensed students and/or interns earning less than \$ 20,000 annual income
<b>\$60</b>	<b>Retiree:</b>	Individuals who were once practicing mental health professionals, now retired and no longer working
<b>\$400</b>	<b>Institutional:</b>	Organizations interested in the mission of LAGPA and wanting to support that mission through financial sponsorship

### LAGPA BOARD OF DIRECTORS

#### Executive Committee

Damien Gonsalves, MFTi, Co-President  
 Robbert Schalekamp, PsyD, Co-President  
 Travis Stobbe, BFA, Secretary/Treasurer  
Executive Director  
 Chuck Stewart, PhD

LAGPA, PO Box 34142  
 Los Angeles, CA 90034  
 310-838-6247  
[www.lagpa.org](http://www.lagpa.org)

#### Board Directors

Orlando Alvarez, PhD • Nicole Gershenson, MA  
 • Mary Guillermin, LMFT • Shani Habibi, PhD •  
 Christopher McKeown, MFT • R.J. Molligan, JD •  
 Terry Oleson, PhD • Fred Wilkey, EdD



LOS ANGELES LGBT CENTER

## MENTAL HEALTH SERVICES



Individual, Couples, Family  
 and Group Counseling.  
 Serving the LGBT community  
 for over forty years.

**323-993-7669**



VISTA DEL MAR  
 ADOPTIONS AT VISTA

Private Infant | International | Foster to Adoption



Vista Del Mar offers a full service adoption program with three pathways to adoption. We have been bringing children and families together since 1948 and are here to help you create your family, too!

#### BREAKING NEWS

Brazil opens doors to adoption for gay and lesbian men and women.

For more information please contact us at 310-836-1223 ext 281 or email [adoptions@vistadelmar.org](mailto:adoptions@vistadelmar.org)



**Registration Form**  
**21<sup>st</sup> Annual LGBTQI Psychotherapy Conference**

**Sunday, November 13, 2016**

**Antioch University LA, 400 Corporate Pointe, Culver City, CA 90230**

**REGISTRATION DEADLINE: This form and payment must be returned by November 9, 2016.**

Name ( <i>print</i> ):		
Degree / License:		
Address:		
City:	State:	Zip:
Phone:		
Email*:		
License or Intern Registration number:		

\*Registration will be confirmed via email. Please print your email clearly.

The cost of CE, breakfast, lunch, and parking for each attended workshop is included in the registration fee.

**CONFERENCE PRE-REGISTRATION**

Check Your Category

**Member (already a member?)**

<input type="checkbox"/>	Current LAGPA Regular/Associate Member	\$ 155
<input type="checkbox"/>	Current LAGPA Student/Intern/Retiree Member	\$ 100

If you are not a current member, simply visit our website at [www.LAGPA.org](http://www.LAGPA.org) and register as a member. Being a member gives you significant discount.

**Non-Member**

<input type="checkbox"/>	Non-Member/Non-Associate Member	\$ 185
<input type="checkbox"/>	Non-Member Student/Intern/Retiree	\$ 130

**REGISTERING THE DAY OF THE CONFERENCE**

Yes, you may register at the door. You save considerable money, however, by pre-registering.

**Member (already a member?)**

<input type="checkbox"/>	Current LAGPA Regular/Associate Member	\$ 185
<input type="checkbox"/>	Current LAGPA Student/Intern/Retiree Member	\$ 130

**Non-Member**

<input type="checkbox"/>	Non-Member/Non-Associate Member	\$ 215
<input type="checkbox"/>	Non-Member Student/Intern/Retiree	\$ 155

**WORKSHOP SELECTION**

For each concurrent session, please identify your first and second choice for each session by writing the workshop number in the spaces below. This information is for conference planning only—you may attend whichever workshops you would like on the day of the conference.

Session 1	Session 2	Session 3
1A, 1B, 1C, 1D	2A, 2B, 2C, 2D	3A, 3B, 3C, 3D
1 <sup>st</sup> Choice:	1 <sup>st</sup> Choice:	1 <sup>st</sup> Choice:
2 <sup>nd</sup> Choice:	2 <sup>nd</sup> Choice:	2 <sup>nd</sup> Choice:

If you are a presenter or volunteer, please check this box. ☐

**METHOD OF PAYMENT**

☐ A check in the amount of \$ \_\_\_\_\_ made payable to **LAGPA**

OR

Charge my: ☐ VISA ☐ Master Card ☐ American Express (Check appropriate box)

Name of Cardholder (as it appears on card)

Please Print: \_\_\_\_\_

Credit Card Number (print clearly):

\_\_\_\_\_

Exp. Date \_\_\_\_/\_\_\_\_ Code on back of card \_\_\_\_ Zip: \_\_\_\_\_

Authorizing Signature: \_\_\_\_\_

Total Amount To Be Charged \$ \_\_\_\_\_

MAIL COMPLETED REGISTRATION FORMS WITH PAYMENT TO:

**LAGPA Conference Registration**

**PO Box 34142, Los Angeles, CA 90034**

OR, FAX To: 310-838-6247

OR, Scan and email to: [LAGPA@sbcglobal.net](mailto:LAGPA@sbcglobal.net)

OR, **register online at [www.LAGPA.org](http://www.LAGPA.org)**

Note: All Students must be unlicensed and must include documentation of full time student status. Please enclose a copy of your current student ID with your registration form

# Phillips Graduate University

**Obtain Your Masters or  
Doctoral Degree in  
Psychology Now!**

**19900 Plummer Street, Chatsworth, CA 91311  
Tel: 818-386-5660 [www.pgu.edu](http://www.pgu.edu)**

*"At Paradigm Malibu, we continue to provide sophisticated, evidence-based treatment for adolescents struggling with anxiety, depression, trauma, disordered eating and substance abuse."*

**Shifting the  
paradigm  
of Adolescent Treatment**

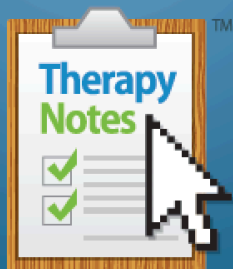


**We specialize in providing state-of-the-art, 30-45 day treatment that includes:**



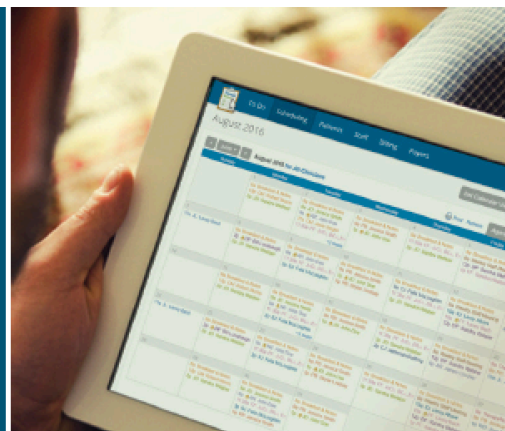
- Seven individual therapy sessions each week
- Five hours of family therapy, support and multi-family sessions each week
- Safe, community-based residential environments with no more than 6 clients
- Expansive academic programming with collegiate tutoring
- Comprehensive diagnostic testing & evaluation
- Aftercare recommendations and consultation to families
- Specialized groups for adolescents with athletic, arts and academic strengths
- Collaborative discharge planning with referring treatment providers

*For questions or inquiries about adolescent treatment or to make a referral (855) 780-8336 or [www.paradigmmalibu.com](http://www.paradigmmalibu.com)*



# TherapyNotes™

Online Practice Management for Behavioral Health Professionals



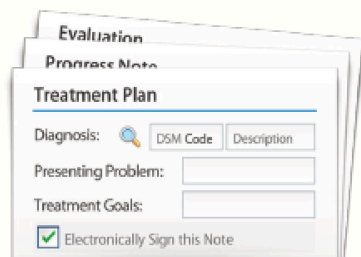
**11:30AM** Appt with Kyle  
*Called in to say he may be a little late*

**12:00PM** Appt with Susan  
*Remember books she borrowed*

☒ Create a Progress Note for your appointment on 9/29.

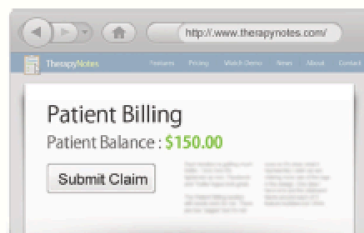
## Scheduling & To-Do Lists

Streamline your practice management and workflow. Past appointments are automatically added to your To-Do List. Sync your calendar to your iPhone. Great multi-clinician scheduling features.



## Patient Notes & EMR

Our form-based system makes it easy to keep up with your notes. Templates are designed specifically for mental health and therapists. Also upload any files to your patient records.



## Electronic Billing

Easily submit claims electronically with TherapyNotes EDI! Track balances, view revenue reports, and generate CMS forms, superbills, and patient statements all from within TherapyNotes.

### ...AND MANY MORE FEATURES!

#### Appointment Reminders

- Automatic text, phone, and email reminders
- Reduce no shows and decrease expenses

#### Fully Integrated Credit Card Processing

Swipe or enter patient credit cards

#### New Patient Portal!

Customers can request appointment times



**My experience with TherapyNotes this past month has been fantastic!**

Firstly, the system is easy to navigate, thorough, flexible, and extremely clinically intuitive. Secondly, technical and customer support has been efficient, fast, and very personal. I am leaving another EHR system for TherapyNotes... gladly. I'm very happy that you've created such a quality product. Thank you!

Dr. Christina Zampitella, FT, Licensed Clinical Psychologist

**Just want to say that I truly love the system!**

It takes all the guesswork out of tracking paperwork. Being able to schedule appointments and then have the system take over and track what is due for each client is wonderful.

Kathleen Bremer, PCC-S

[Many more stories on TherapyNotes.com!](http://www.therapynotes.com)

**Special Offer!**

Just for LAGPA  
Conference Attendees!

Sign Up And Receive Your First  
**2 Months FREE!**  
Use Promo Code: **LAGPACONF16**  
Offer Expires: 2/1/2017



View Features and Sign Up Today at [www.therapynotes.com](http://www.therapynotes.com)